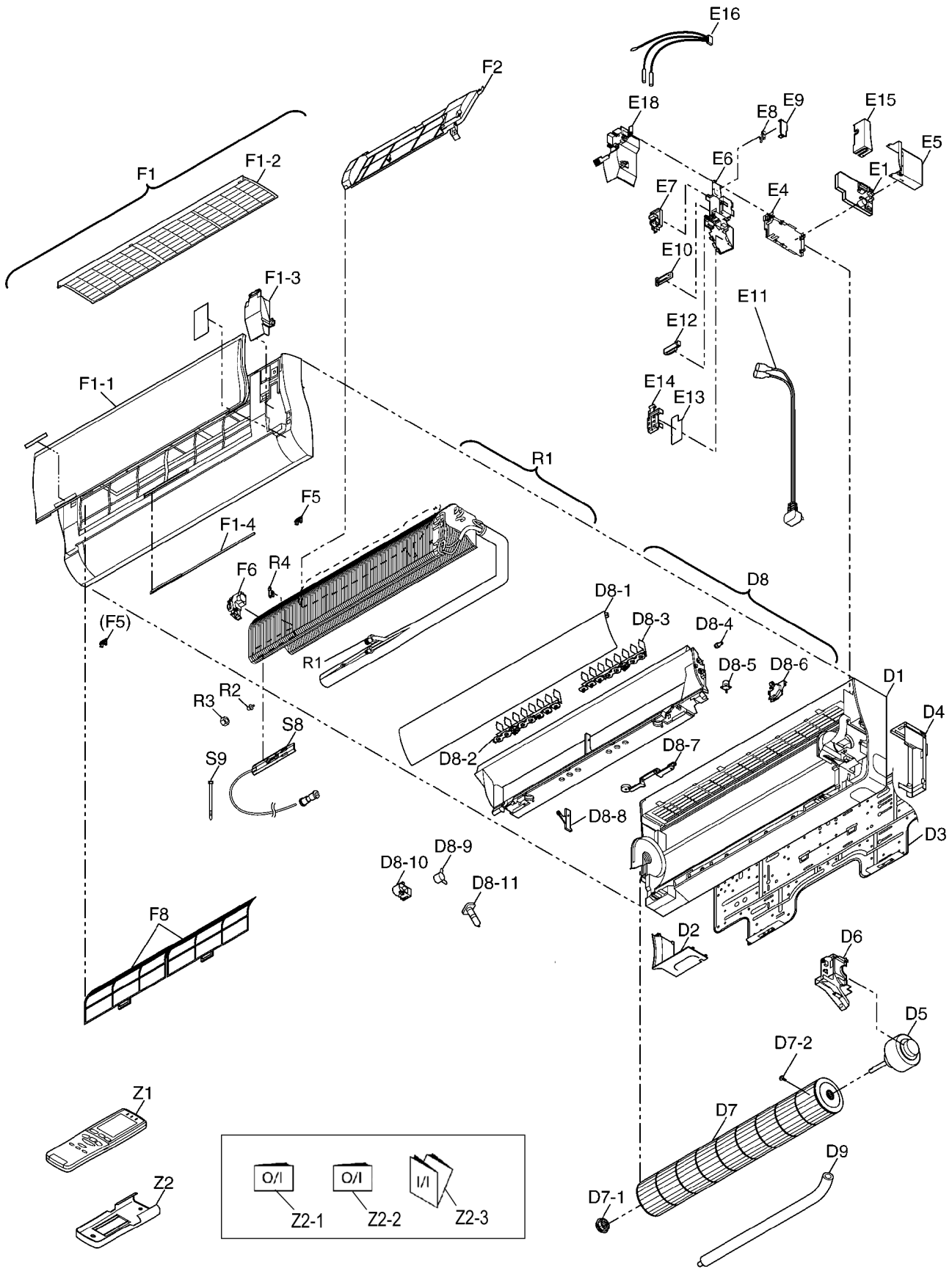


15 Exploded View and Replacement Parts List

15.1. Exploded View (Indoor Unit)



Note:
The above exploded view is for the purpose of parts disassembly and replacement.

The non-numbered parts are not kept as standard service parts.

15.2. Replacement Parts List (Indoor Unit)

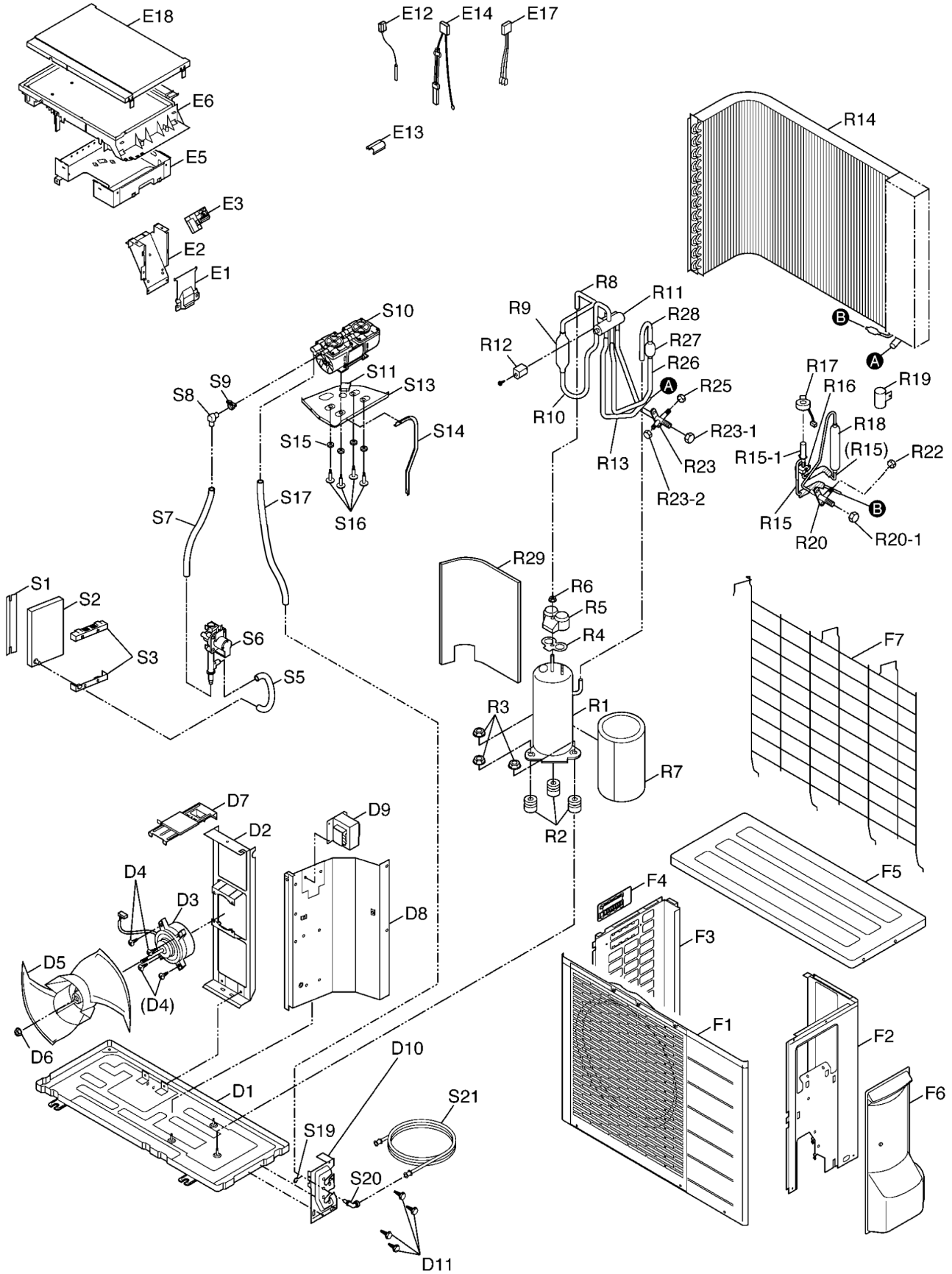
<Models: CS-HE9DKE / CS-HE12DKE>

REF. NO.	PART NAME & DESCRIPTION	QTY.	CS-HE9DKE	CS-HE12DKE	REMARKS
D1	CHASSY COMPLETE	1	CWD50C50C1430	←	
D2	L-PLATE	1	CWD601065	←	
D3	INSTALLATION PLATE	1	CWH361054	←	
D4	PARTICULAR PLATE	1	CWD911316	←	
D5	FAN MOTOR	1	ARW41X8P30AC	←	
D6	FAN MOTOR PLATE	1	CWD911313	←	
D7	CROSS FLOW FAN	1	CWH02C1024	←	
D7-1	BERING ASS'Y	1	CWH64K1005	←	
D7-2	SCREW - CROSS FLOW FAN	1	CWH4580304	←	
D8	DISCHARGE GRILLE COMPLETE	1	CWE20C2430	←	
D8-1	VERTICAL VANE	1	CWE241129	←	
D8-2	HORIZONTAL VANE (LEFT)	1	CWE24C1054	←	
D8-3	HORIZONTAL VANE (RIGHT)	1	CWE24C1055	←	
D8-4	CAP (FOR VERTICAL VANE BERING)	1	CWH52160	←	
D8-5	AIR SWING MOTOR (HORIZONTAL VANE)	1	CWA981107J	←	
D8-6	PROTECTION COVER (RIGHT)	1	CWH811018	←	
D8-7	GEAR (FOR HORIZONTAL VANE)	1	CWH68C1017	←	
D8-8	FULCRUM	1	CWH621031	←	
D8-9	AIR SWING MOTOR (VERTICAL VANE)	2	CWA981105J	←	
D8-10	PROTECTION COVER (LEFT)	1	CWH811019	←	
D8-11	CAP (DRAIN CAP)	1	CWH521091	←	
D9	DRAIN HOSE	1	CWH851107	←	
E1	ELECTRONIC CONTROLLER - MAIN	1	CWA73C1870	CWA73C1871	
E4	CONTROL COVER - 1	1	CWH131163	←	
E5	CONTROL COVER - 3	1	CWH13K1010	←	
E6	CONTROL BOARD BOX	1	CWH121009	←	
E7	TERMINAL BOARD COMPLETE	1	CWA28C2192	←	
E8	SWITCH (MICRO SW)	1	KOKABF000013	←	
E9	SWITCH HOLDER	1	CWD932308	←	
E10	CORD HOLDER	1	CWD77002	←	
E11	POWER SUPPLY CORD	1	CWA20C2441	←	
E12	ELECTRONIC CONTROLLER (SUB)	1	CWA743835	←	
E13	ELECTRONIC CONTROLLER (RECEIVER, DISPLAY)	1	CWA743834	←	
E14	HOLDER - ELECTRONIC CONTROLLER (RECEIVER, DISPLAY)	1	CWD932309	←	
E15	CONTROL COVER - 2	1	CWH131165	←	
E16	SENSOR COMPLETE (INTAKE AIR, PIPE)	1	CWA50C2286	←	
E18	ANTI-WATER SPLASHING PLASTIC	1	CWD911317	←	
F1	FRONT GRILLE COMPLETE	1	CWE11C3293XA	←	
F1-1	FRONT PANEL	1	CWE22C1206XA	←	
F1-2	TOP INTAKE GRILLE	1	CEW221090	←	
F1-3	GRILLE DOOR	1	CWE141060XA	←	
F1-4	OXYGEN MONITOR	1	CWE39C1085	←	
F2	ION GENERATOR	1	CWH94C0006	←	
F5	CAP (SCREW CAP)	2	CWH521088	←	
F6	GEAR (FRONT PANEL MOTOR)	1	CWH68C1021	←	
F8	AIR FILTER	2	CWD001163	←	
R1	EVAPORATOR	1	CWB30C1725	CWB30C1729	
R2	FLARE NUT (1/4")	1	CWT25086 (1/4")	←	
R3	FLARE NUT (3/8")	1	CWT25087 (3/8")	CWT25096 (1/2")	
R4	ANTI-FITTING PLASTIC	1	CWD932334	←	
S8	BOX	3	CWD76C1015	←	
S9	BELT	1	CWH88000	←	
Z1	REMOTE CONTROL COMPLETE	1	CWA75C2688X	←	
Z2	REMOTE CONTROL HOLDER	1	CWH361046	←	
Z2-1	OPEARTING INSTRUCTIONS	1	CWF564743	←	
Z2-2	OPEARTING INSTRUCTIONS	1	CWF564897	←	
Z2-3	INSTALLATION INSTRUCTIONS	1	CWF564897	←	

(Note)

- All parts are supplied from ACD, Japan.
- "O" marked parts are recommended to be kept in stock.

15.3. Exploded View (Outdoor Unit)



Note:

The above exploded view is for the purpose of parts disassembly and replacement.
 The non-numbered parts are not kept as standard service parts.

15.4. Replacement Parts List (Outdoor Unit)

<Models: CU-HE9DKE / CU-HE12DKE>

REF NO.	DESCRIPTION & NAME	QTY.	CU-HE9DKE	CU-HE12DKE	REMARKS
D1	CHASSY COMPLETE	1	CWD50K2103	←	
D2	FAN MOTOR BRACKET	1	CWD541021	←	
D3	FAN MOTOR	1	ARW44X8P40AC	←	
D4	SCREW - FAN MOTOR MOUNT	4	CWH55252J	←	
D5	PROPELLER FAN	1	CWH03K1014	←	
D6	NUT - PROPELLER FAN	1	CWH561034J	←	
D7	FAN MOTOR MOUNT PLATE (UPPER)	1	CWMD910001X2	←	
D8	SOUND PROOF MATERIAL	1	CWH151076	←	
D9	REACTOR	1	G0A193M00003	G0A193M00002	
D10	HOLDER - COUPLING	1	CWH351029	←	
D11	SCREW -COUPLING MOUNT	4	XVG6B14VW	←	
E1	CONTROL COVER (TERMINAL PLATE COVER)	1	CWH131244X	←	
E2	CONTROL PLATE CASING (TERMINAL BOARD)	1	CWH102284	←	
E3	TERMINAL BOARD	1	CWA38K1121	←	
E5	CONTROL BOARD (ELECTRONIC CONTROLLER - LOWER)	1	CWH102244X	←	
E6	ELECTRONIC CONTROLLER	1	CWA73C1819R	CWA73C1820R	
E12	SENSOR COMPLETE (DISCHARGE TEMP.)	1	CWA50C2281	←	
E13	SENSOR HOLDER (DISCHARGE TEMP.)	1	CWH321025	←	
E14	SENSOR COMPLETE (OUTDOOR, PIPE TEMP.)	1	CWA50C2219	←	
E17	LEAD WIRE COMPLETE (COMPRESSOR)	1	CWA67C5736	←	
E18	CONTROL BOARD COVER	1	CWH131206XF	←	
F1	CABINET FRONT PLATE	1	CWE06C1126	←	
F2	CABINET SIDE PLATE (RIGHT)	1	CWE04C1064	←	
F3	CABINET SIDE PLATE (LEFT)	1	CWE041132	←	
F4	HANDLE	1	CWE161013	←	
F5	CABINET TOP PLATE	1	CWE031053	←	
F6	CONTROL BOARD COVER (2-, 3-WAY VALVE COVER)	1	CWMH13C0002	←	
F7	WIRE NET	1	CWD041046	←	
R1	COMPRESSOR	1	CWB092332	←	
R2	ANTI-VIBRATION BUSHING (COMPRESSOR)	3	CWH501022	←	
R3	NUT - COMPRESSOR MOUNT	3	CWH56000J	←	
R4	RUBBER GASKET (COMPRESSOR)	1	CWH7070603	←	
R5	TERMINAL COVER (COMPRESSOR)	1	CWH17006	←	
R6	NUT - TERMINAL COVER	1	CWH7080300J	←	
R7	SOUND PROOF MATERIAL (COMPRESSOR)	1	CWG302303	←	
R8	MULTI BEND TUBE (COMPRESSOR - LIQUID RECEIVER)	1	CWT334002	←	
R9	LIQUID RECEIVER (MULTI BEND TUBE - MULTI BEND TUBE)	1	CWB14011	←	
R10	MULTI BEND TUBE (LIQUID RECEIVER - 4-WAY VALVE)	1	CWT333570	←	
R11	4-WAY VALVE	1	CWB001037J	←	
R12	V-COIL COMPLETE (4-WAY VALVE)	1	CWA43C2144J	←	
R13	MULTI BEND TUBE (4-WAY VALVE - CONDENSER)	1	CWT333567	←	
R14	CONDENSER	1	CWB32C1343BX	←	
R15	TUBE ASS'Y	1	CWT023319	←	
R15-1	EXPANSION VALVE	1	CWB051016J	←	
R16	BUSHING	1	CWMH510005	←	
R17	V-COIL COMPLETE (EXPANSION VALVE)	1	CWA43C2058J	←	
R18	DRYER	1	CWB101016	←	
R19	LIQUID RECEIVER HOLDER	1	CWD791001	←	
R20	2-WAY VALVE	1	CWB021129J	←	
R20-1	CAP (VALVE ROD)	2	CWH521098	←	
R22	FLARE NUT (1/4")	1	CWT25086	←	
R23	3-WAY VALVE	1	CWB011165J	CWB011316J	
R23-1	CAP (VALVE ROD)	2	CWH521098	CWH521130	
R23-2	CAP (SERVICE PORT)	1	CWH521099	←	
R25	FLARE NUT	1	CWT25087 (3/8")	CWT25096 (1/2")	
R26	MULTI BEND TUBE (4-WAY VALVE - STRAINER)	1	CWT333568	←	
R27	STRAINER (MULTI BEND TUBE - U-TUBE)	1	CWB111004	←	
R28	U-TUBE (STARINER - CONDENSER)	1	CWT231329	←	
R29	SOUND PROOF BOARD	1	CWG02303	←	
S1	FILTER (OXYGEN GENERATOR) HOLDER - 1	1	CWD911429	←	
S2	FILTER (OXYGEN GENERATOR)	1	CWD071012	←	
S3	FILTER (OXYGEN GENERATOR) HOLDER - 2	1	CWD911430	←	
S5	FLEXIBLE PIPE COMPLETE (2-WAY VALVE - FILTER)	1	CWH851078	←	
S6	2-WAY VALVE (OXYGEN SUPPLY)	1	CWB021126J	←	
S7	FLEXIBLE PIPE COMPLETE (2-WAY VALVE - VACUUM PUMP)	1	CWH851079	←	
S8	TUBE CONNECTOR	1	CWT291049	←	
S9	BELT	1	CWH881060	←	
S10	OXYGEN PUMP	1	CWB532034J	←	
S11	CAPACITOR	1	DS441125QP-E	←	
S13	OXYGEN PUMP MOUNT PLATE	1	CWD911283	←	

REF NO.	DESCRIPTION & NAME	QTY.	CU-HE9DKE	CU-HE12DKE	REMARKS
S14	OXYGEN PUMP SUPPORTING PLATE	1	CWD911284	←	
S15	ANTI-VIBRATION BUSHING (OXYGEN PUMP)	4	CWH501079	←	
S16	BOLT COMPLETE	4	CWH55C1007J	←	
S17	FLEXIBLE PIPE	1	CWH851077	←	
S19	SPACER	1	CWH581003J	←	
S20	TUBE CONNECTOR	1	CWT291029	←	
S21	OXYGEN TUBE - INTER CONNECT	1	CWH85C1032	←	

(Note)

- All parts are supplied from ACD, Japan.
- "O" marked parts are recommended to be kept in stock.