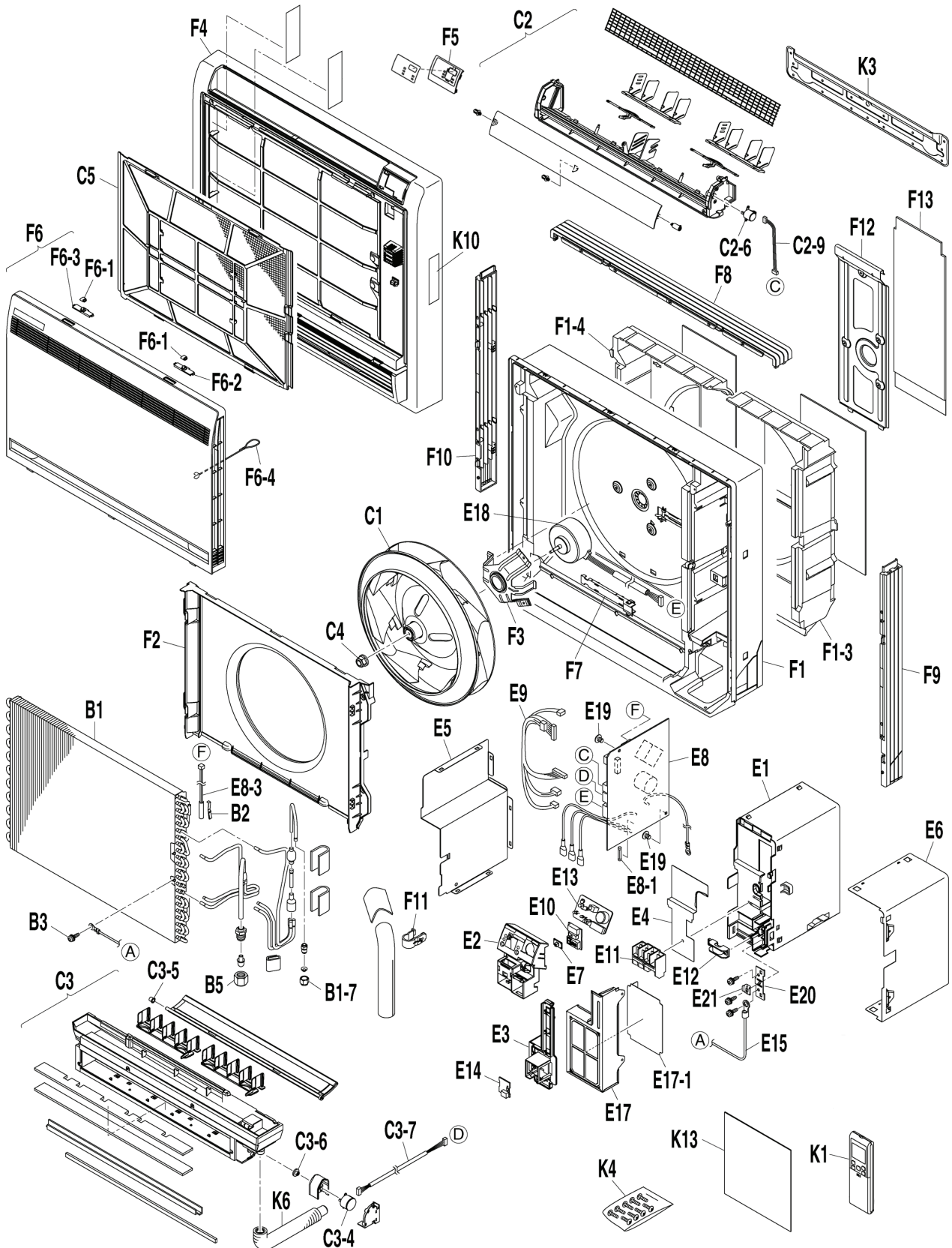


# 14 Exploded View and Replacement Parts List

## 14.1. Indoor Unit



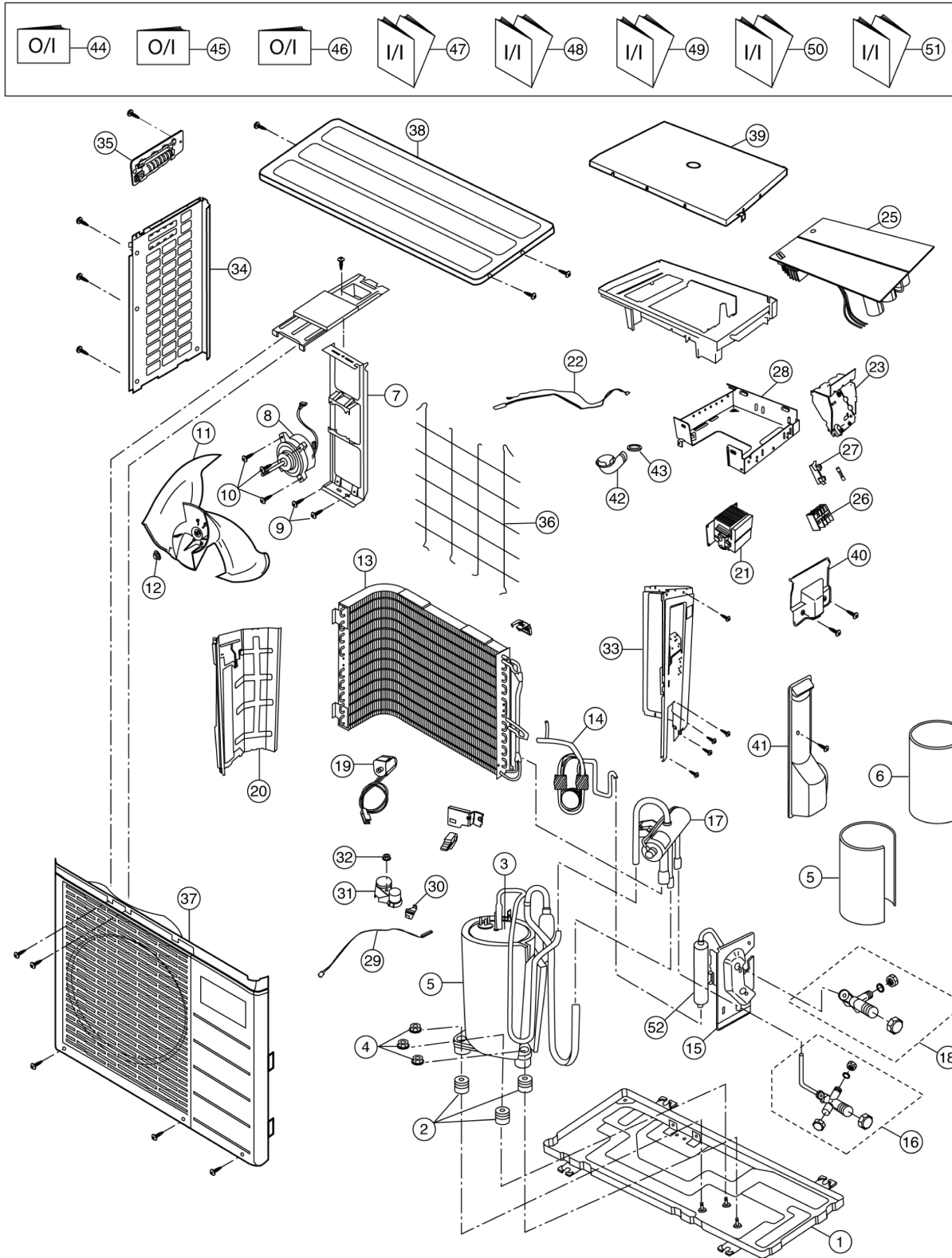
REF. NO.	PART NAME AND DESCRIPTION	QTY.	CS-E9GFEW	CS-E12GFEW	CS-E18GFEW	REMARKS
B1	EVAPORATOR ASS'Y	1	CW1786554	←	CW1767368	
B1-7	FLARE NUT	1	CW1723546	←	←	
B2	FITTING SPRING / THERMISTOR	1	CW380120	←	←	
B3	GROUNDING TIP (W/WASHER)	1	CW113783J	←	←	
B5	FLARE NUT	1	CW119848J	←	CW119849J	
C1	TURBO FAN ASS'Y	1	CW1767414	←	←	
C2	AIR GUIDE PLATE ASS'Y	1	CW1767421	←	←	
C2-6	STEPPING MOTOR	1	CW151065J	←	←	O
C2-9	WIRE HARNESS ASS'Y (UPPER)	1	CW1767546	←	←	
C3	DRAIN PAN ASS'Y	1	CW1767553	←	←	
C3-4	STEPPING MOTOR ASS'Y	1	CW1767591	←	←	
C3-5	SLEEVE BEARING	1	CW1767609	←	←	
C3-6	SHAFT (DAMPER)	1	CW1767616	←	←	
C3-7	WIRE HARNESS ASS'Y (LOWER)	1	CW1767623	←	←	
C4	LOCK NUT/ FAN BLADE	1	CW847002J	←	←	
C5	AIR FILTER	1	CW1767647	←	←	
E1	SWITCH BOX	1	CW1767654	←	←	
E2	INDICATION LAMP COVER	1	CW1786561	←	←	
E3	MOUNTING PLATE, PRINTED CIRCUIT	1	CW1767678	←	←	
E4	SHIELD PLATE	1	CW1767685	←	←	
E5	SHIELD PLATE	1	CW1767692	←	←	
E6	SHIELD PLATE	1	CW1767700	←	←	
E7	SWITCH KNOB	1	CW0728803	←	←	
E8	PRINTED CIRCUIT ASS'Y (CONTROL)	1	CW1786617	CW1786624	CW1786631	O
E8-1	FUSE	1	CW153875J	←	←	
E8-3	THERMISTOR (FOR COIL)	1	CW129970J	←	←	
E9	WIRE HARNESS ASS'Y	1	CW1786648	←	←	
E10	PRINTED CIRCUIT ASS'Y (SERVICE)	1	CW1786794	←	←	
E11	TERMINAL BLOCK	1	CW1786662	←	←	
E12	WIRE CLAMP	1	CW0812847	←	←	
E13	PRINTED CIRCUIT ASS'Y (DISPLAY)	1	CW1786655	←	←	
E14	PRINTED CIRCUIT ASS'Y (SENSOR)	1	CW1767755	←	←	
E15	EARTH WIRE	1	CW1786679	←	←	
E17	SHIELD PLATE ASS'Y	1	CW1767786	←	←	
E17-1	INSULATION SHEET	1	CW1767793	←	←	
E18	DC FAN MOTOR	1	CW1767801	←	←	O
E19	PAN HEAD TAPPING SCREW	2	CW111403J	←	←	
E20	EARTH PLATE	1	CW1786686	←	←	
E21	WASHER (FOR EARTH)	2	CW1786749	←	←	
F1	BOTTOM FRAME ASS'Y	1	CW1767818	←	←	
F1-3	THERMAL INSULATION ASS'Y	1	CW1786756	←	←	
F1-4	THERMAL INSULATION ASS'Y	1	CW1786763	←	←	
F2	BELL MOUTH ASS'Y	1	CW1767849	←	←	
F3	COVER, MOTOR	1	CW1767856	←	←	
F4	FRONT GRILLE ASS'Y	1	CW1767863	←	←	
F5	CONTROL PANEL ASS'Y	1	CW1786693	←	←	
F6	SUCTION GRILLE ASS'Y	1	CW1786718	←	←	
F6-1	KNOB (1)	2	CW1767933	←	←	
F6-2	KNOB (2)	1	CW1768013	←	←	
F6-3	KNOB (2)	1	CW1768020	←	←	
F6-4	STRING	1	CW1768037	←	←	
F7	WIRE CLAMP	1	CW1768044	←	←	
F8	CASING (UPPER)	1	CW1768051	←	←	
F9	CASING (RIGHT)	1	CW1768068	←	←	
F10	CASING (LEFT)	1	CW1768075	←	←	

REF. NO.	PART NAME AND DESCRIPTION	QTY.	CS-E9GFEW	CS-E12GFEW	CS-E18GFEW	REMARKS
F11	FIXTURE, REF. PIPING	1	CW1768082	←	←	
F12	REINFORCE PLATE ASS'Y	1	CW1768099	←	←	
F13	THERMAL INSULATION ASS'Y	1	CW1768107	←	←	
K1	REMOTE CONTROL	1	CWA75C3096	←	←	O
K3	INSTALLATION PLATE	1	CW1768121	←	←	
K4	SCREW KIT	1	CW1786965	←	←	
K6	DRAIN HOSE ASS'Y	1	CW1768138	←	←	
K13	TAPE	1	CW1786871	←	←	
	THERMISTOR (FOR AIR)	2	CW110579J	←	←	

(Note)

- All parts are supplied from ACBU, Japan.
- "O" marked parts are recommended to be kept in stock.

## 14.2. CU-E9GFE CU-E12GFE



**Note:**

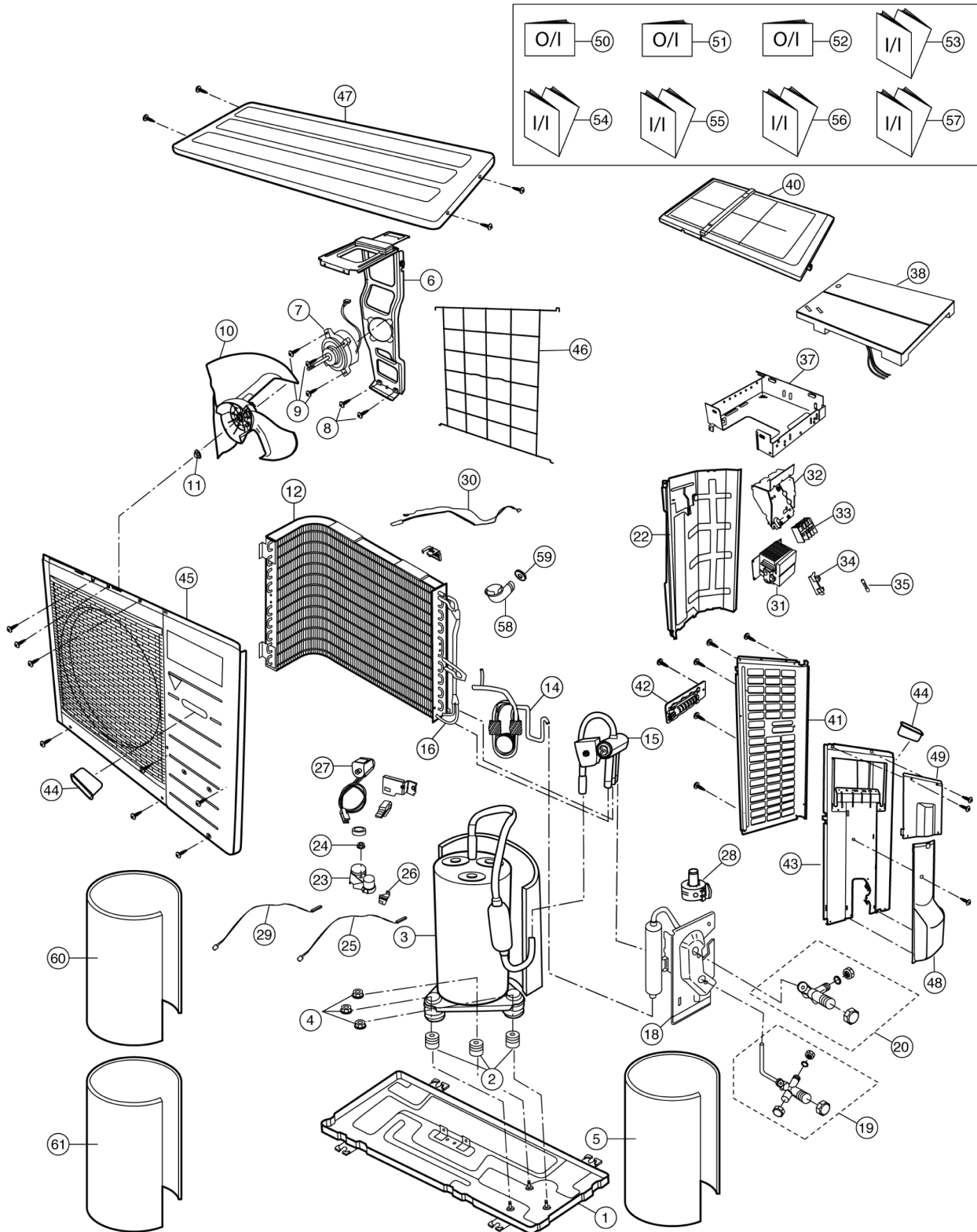
The above exploded view is for the purpose of parts disassembly and replacement.  
The non-numbered parts are not kept as standard service parts.

REF. NO.	PART NAME AND DESCRIPTION	QTY.	CU-E9GFE	CU-E12GFE
1	CHASSY ASSY	1	CWD50K2073	←
2	ANTI-VIBRATION BUSHING	3	CWH50077	←
3	COMPRESSOR	1	5RS102XBC01	←
4	NUT-COMPRESSOR MOUNT	3	CWH56000J	←
5	SOUND PROOF MATERIAL	1	CWG302293	←
6	SOUND PROOF MATERIAL	1	CWG302292	←
7	FAN MOTOR BRACKET	1	CWD541030	←
8	FAN MOTOR (AC 25W SINGLE) (AC 30W SINGLE)	1	CWA951405J	CWA951407J
9	SCREW - FAN MOTOR BRACKET	2	CWH551198	CWH551174J
10	SCREW - FAN MOTOR MOUNT	3	CWH55252J	←
11	PROPELLER FAN ASSY	1	CWH03K1006	←
12	NUT - PROPELLER FAN	1	CWH56053J	←
13	CONDENSER	1	CWB32C1599	←
14	TUBE ASSY CO (CAP./CHK VALVE)	1	CWT01C3257	CWT01C3258
15	HOLDER-COUPLING	1	CWH351023	←
16	3 WAYS VALVE (GAS)	1	CWB011374	←
17	4 WAYS VALVE	1	CWB001037J	←
18	2-WAYS VALVE (LIQUID)	1	CWB021301	←
19	V-COIL COMPLETE	1	CWA43C2143J	←
20	SOUND PROOF BOARD	1	CWH151025	←
21	REACTOR	1	CWA421084	G0A193M00001
22	SENSOR COMPLETE	1	CWA50C2205	←
23	CONTROL BOARD CASING	1	CWH102273	←
24	TERMINAL BOARD ASSY	1	CWA28K1110J	←
25	ELECTRONIC CONTROLLER-MAIN	1	CWA73C2628R	CWA73C2629R
26	FUSE CAP TERMINAL	1	K5D203BBA002	←
27	FUSE HOLDER	1	K3GB1PH00016	←
28	CONTROL BOARD	1	CWH102114	←
29	SENSOR COMPLETE	1	CWA50C2391	←
30	HOLDER SENSOR	1	CWH321023	←
31	TERMINAL COVER	1	CWH171039A	←
32	NUT-TERMINAL COVER	1	CWH7080300J	←
33	CABINET SIDE PLATE CO.	1	CWE04C1011	←
34	CABINET SIDE PLATE (L)	1	CWE041031A	←
35	HANDLE	1	CWE161010	←
36	WIRE NET	1	CWD041054A	←
37	CABINET FRONT PLATE CO.	1	CWE06C1039	←
38	CABINET TOP PLATE	1	CWE031014A	←
39	CONTROL BOARD COVER	1	CWH131104	←
40	CONTROL BOARD COVER	1	CWH131110	←
41	CONTROL BOARD COVER CO.	1	CWH13C1064	←
42	L-TUBE	1	CWH5850080	←
43	PACKING-L.TUBE	1	CWB81012	←
44	OPERATING INSTRUCTION	1	CWF565588	←
45	OPERATING INSTRUCTION	1	CWF565589	←
46	OPERATING INSTRUCTION	1	CWF565628	←
47	INSTALLATION INSTRUCTION	1	CWF613182	←
48	INSTALLATION INSTRUCTION	1	CWF613183	←
49	INSTALLATION INSTRUCTION	1	CWF613184	←
50	INSTALLATION INSTRUCTION	1	CWF613185	←
51	INSTALLATION INSTRUCTION	1	CWF613188	←
52	DRYER	1	CWB101017J	←

(Note)

- All parts are supplied from PHAAM, Malaysia (Vendor Code: 061).
- "O" maked parts are recommended to be kept in stock.

### 14.3. CU-E18GFE



Note:  
 The above exploded view is for the purpose of parts disassembly and replacement.  
 The non-numbered parts are not kept as standard service parts.

REF. NO.	PART NAME AND DESCRIPTION	QTY.	CU-E18GFE
1	CHASSY ASSY	1	CWD50K2085
2	ANTI-VIBRATION BUSHING	3	CWH50077
3	COMPRESSOR	1	5CS130XAD04
4	NUT-COMPRESSOR MOUNT	3	CWH56000J
5	SOUND PROOF MATERIAL	1	CWG302302
6	FAN MOTOR BRACKET	1	CWD541054
7	FAN MOTOR	1	CWA981166J
8	SCREW - FAN MOTOR BRACKET	2	CWH551198
9	SCREW - FAN MOTOR MOUNT	3	CWH551106J
10	PROPELLER FAN ASSY	1	CWH03K1016
11	NUT - PROPELLER FAN	1	CWH56053J
12	CONDENSER	1	CWB32C1527
14	TUBE ASSY COMPLETE (CAP TUBE/EXP. VALVE)	1	CWT023679
15	4 WAYS VALVE	1	CWB001026J
16	STRAINER	1	CWB11094
18	HOLDER-COUPLING	1	CWH351035
19	3 WAYS VALVE (GAS)	1	CWB011361
20	2-WAYS VALVE (LIQUID)	1	CWB021292
22	SOUND PROOF BOARD	1	CWH151050
23	TERMINAL COVER	1	CWH171039A
24	NUT-TERMINAL COVER	1	CWH7080300J
25	SENSOR COMPLETE (COMP. TOP)	1	CWA50C2185
26	HOLDER SENSOR	1	CWH321074
27	V-COIL COMPLETE (4-WAYS VALVE)	1	CWA43C2168J
28	V-COIL COMPLETE (EXPAND VALVE)	1	CWA43C2058J
29	SENSOR COMPLETE (COMP. DISC.)	1	CWA50C2180
30	SENSOR COMPLETE	1	CWA50C2181
31	REACTOR	1	CWA421069
32	CONTROL BOARD CASING (SIDE)	1	CWH102273
33	TERMINAL BOARD ASSY	1	CWA28K1110J
34	FUSE HOLDERS	1	K3GB1PH00016
35	FUSE	1	K5D303BBA002
37	CONTROL BOARD CASING (BOTTOM)	1	CWH102282
38	ELECTRONIC CONTROLLER - MAIN	1	CWA73C2630R
40	CONTROL BOARD CASING (TOP)	1	CWH131167
41	CABINET SIDE PLATE (LEFT)	1	CWE041082A
42	HANDLE	1	CWE161010
43	CABINET SIDE PLATE (RIGHT)	1	CWE041083A
44	HANDLE	2	CWE16000E
45	CABINET SIDE PLATE CO.	1	CWE06K1043
46	WIRE NET	1	CWD041041A
47	CABINET TOP PLATE	1	CWE031031A
48	CONTROL BOARD COVER (BOTTOM)	1	CWH131168
49	CONTROL BOARD COVER (TOP)	1	CWH131169A
50	OPERATING INSTRUCTION	1	CWF565588
51	OPERATING INSTRUCTION	1	CWF565589
52	OPERATING INSTRUCTION	1	CWF565628
53	INSTALLATION INSTRUCTION	1	CWF613182
54	INSTALLATION INSTRUCTION	1	CWF613183
55	INSTALLATION INSTRUCTION	1	CWF613184
56	INSTALLATION INSTRUCTION	1	CWF613185
57	INSTALLATION INSTRUCTION	1	CWF613188
58	DRAIN HOSE	1	CWH5850080
59	PACKING	1	CWB81012
60	SOUND PROOF MATERIAL	1	CWG302270

REF. NO.	PART NAME AND DESCRIPTION	QTY.	CU-E18GFE
61	SOUND PROOF MATERIAL	1	CWG302300

(Note)

- All parts are supplied from PHAAM, Malaysia (Vendor Code: 061).
- "O" maked parts are recommended to be kept in stock.