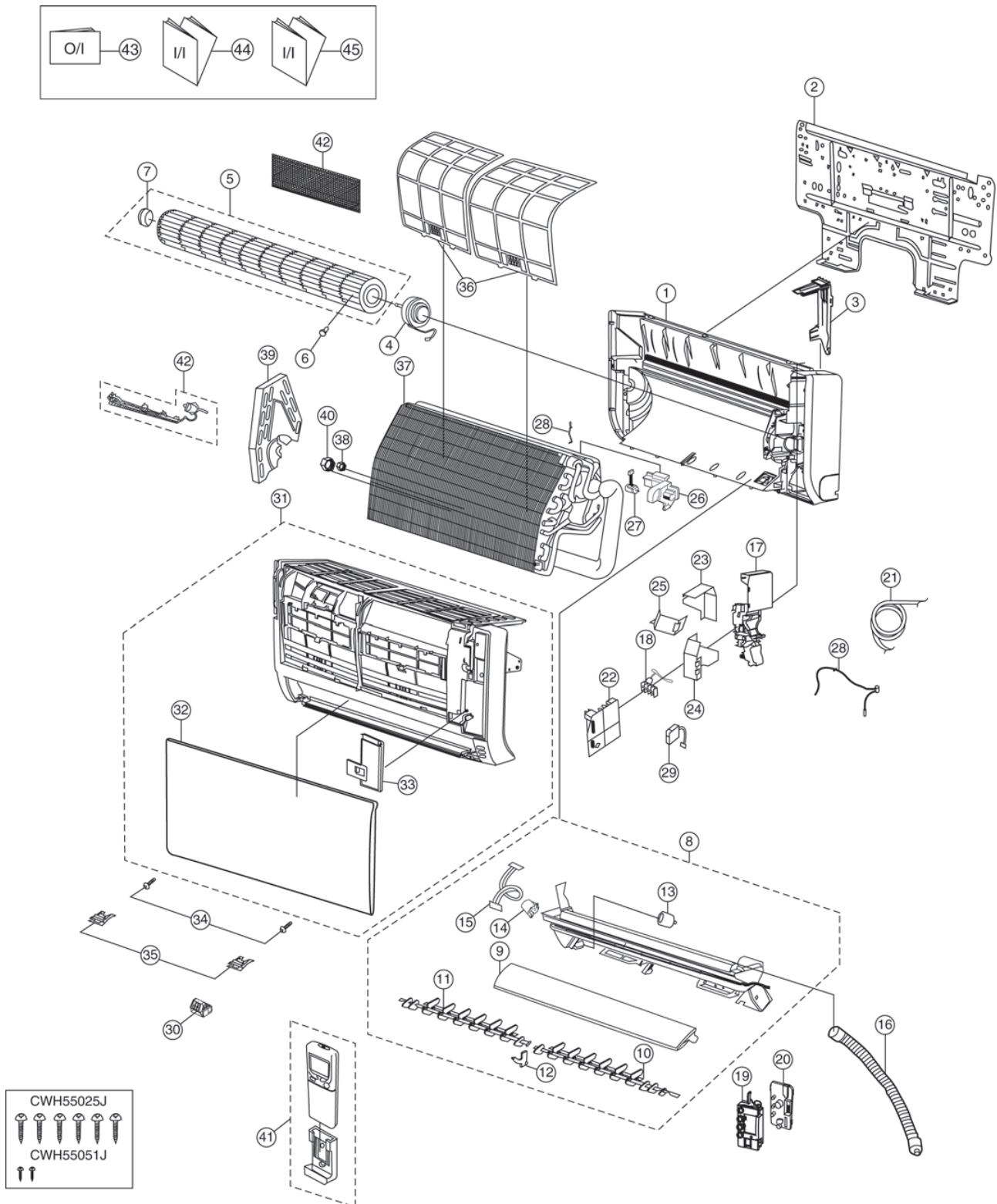


18 Exploded View and Replacement Parts List

18.1. Indoor Unit



Note

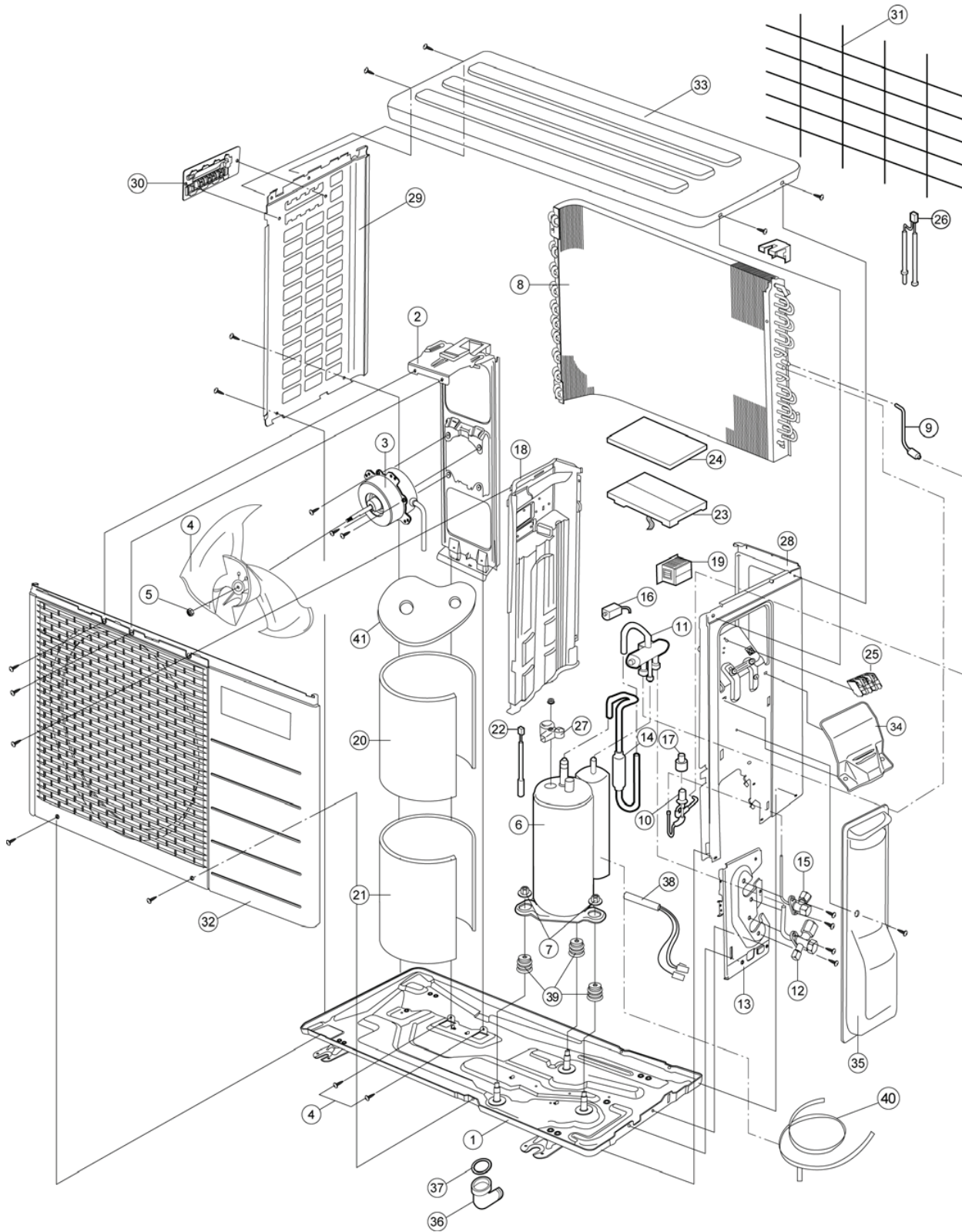
The above exploded view is for the purpose of parts disassembly and replacement.
 The non-numbered parts are not kept as standard service parts.

REF. NO.	PART NAME & DESCRIPTION	QTY.	CS-TE9HKE-5	CS-TE12HKE	REMARKS
1	CHASSY COMPLETE	1	CWD50C1558	←	
2	INSTALLATION PLATE	1	CWH361074	←	
3	BACK COVER CHASSIS	1	CWD911465A	←	
4	FAN MOTOR	1	CWA981195CB	←	O
5	CROSS FLOW FAN COMPLETE	1	CWH02K1029	←	O
6	SCREW - CROSS FLOW FAN	1	CWH551146	←	
7	BEARING ASS'Y	1	CWH64K1005	←	
8	DISCHARGE GRILLE COMPLETE	1	CWE20C2754	←	
9	HORIZONTAL VANE	1	CWE24C1115	←	
10	HORIZONTAL VANE COMPLETE (R)	1	CWE24C1221	←	O
11	HORIZONTAL VANE COMPLETE (L)	1	CWE24C1222	←	O
12	FULCRUM	1	CWH621050A	←	
13	CAP (DRAIN CAP)	1	CWH521091	←	
14	AIR SWING MOTOR	1	CWA981106J	←	O
15	LEADWIRE FOR AIR SWING MOTOR	1	CWA67C5265	←	
16	DRAIN HOSE	1	CWH851110	←	
17	CONTROL BOARD CASING	1	CWH102280	←	
18	TERMINAL BOARD COMPLETE	1	CWA28C2233	←	O
19	DISPLAY PCB HOLDER	1	CWD932475	←	
20	ELECTRONIC CONTROLLER - RECEIVER, INDICATOR	1	CWA743634	←	O
21	POWER SUPPLY CORD	1	CWA20C2679	←	
22	ELECTRONIC CONTROLLER - MAIN	1	CWA73C3236	←	O
23	CONTROL COVER (LOWER)	1	CWH131229	←	
24	CONTROL COVER (PLASTIC PLATE - UPPER)	1	CWH131232	←	
25	CONTROL COVER (STEEL PLATE - UPPER)	1	CWH131230	←	
26	GEAR (FRONT PANEL OPEN/CLOSE MOTOR)	1	CWH68C1023	←	
27	FRONT PANEL OPEN/CLOSE MOTOR	1	L6JAEDJH0001	←	
28	SENSOR HOLDER (PIPE TEMP)	1	CWH32137	←	
29	ELECTRONIC CONTROLLER - IONIZER	1	CWA73C1791	←	O
30	ION GENERATOR	1	CWH94C0005	←	
31	FRONT GRILLE COMPLETE	1	CWE11C4072	←	
32	INTAKE GRILLE	1	CWE22C1450	←	
33	GRILLE DOOR	1	CWE141028	←	
34	SCREW FRONT GRILLE	2	XTT4 + 16CFJ	←	
35	CAP	2	CWH521025E	←	
36	AIR FILTER	1	CWD001149	←	
37	EVAPORATOR COMPLETE (WITH PIPE)	1	CWB30C1608	CWB30C1706	O
38	FLARE NUT (1/4")	1	CWT25086	←	
39	EVAPORATOR HOLDER	1	CWD661048	←	
40	FLARE NUT (3/8") (1/2")	1	CWT251031	CWT251032	
41	REMOTE CONTROL COMPLETE	1	CWA75C3196	←	O
42	SUPER ALLERU BUSTER FILTER	1	CWD00C1263	←	
43	OPERATION INSTRUCTION	1	CWF565950	←	
44	INSTALLATION INSTRUCTION	1	CWF613400	←	
45	INSTALLATION INSTRUCTION	1	CWF613401	←	

(NOTE)

- All parts are supplied from PHAAM, Malaysia (Vendor Code: 061).
- "O" marked parts are recommended to be kept in stock.

18.2. Outdoor Unit



Note

The above exploded view is for the purpose of parts disassembly and replacement.
The non-numbered parts are not kept as standard service parts.

REF. NO.	PART NAME & DESCRIPTION	QTY.	CU-TE9HKE-5	CU-TE12HKE-5	REMARKS
1	CHASSY ASSY	1	CWD50K2073	←	
2	FAN MOTOR BRACKET	1	CWD541030	←	
3	FAN MOTOR, AC 25W SINGLE	1	CWA951553	CWA951542	O
4	PROPELLER FAN ASSY	1	CWH03K1010	←	
5	NUT - PROPELLER FAN	1	CWH56053J	←	
6	COMPRESSOR	1	5RS102XBC01	←	O
7	NUT - COMPRESSOR MOUNT	3	CWH56000J	←	
8	CONDENSOR CO.	1	CWB32C2456	←	O
9	STRAINER	1	CWB11094	←	
10	TUBE ASSY (EXP.VALVE)	1	CWT01C4434	←	
11	4-WAYS VALVE	1	CWB001037J	←	O
12	3-WAYS VALVE (GAS)	1	CWB011374	CWB011367	O
13	HOLDER COUPLING	1	CWH351023	←	
14	DISCHARGE MUFFLER	1	CWB121010	←	
15	2-WAYS VALVE (LIQUID)	1	CWB021301	←	O
16	V-COIL COMPLETE	1	CWA43C2143J	←	O
17	V-COIL COMPLETE FOR EXP.VALVE	1	CWA43C2058J	←	O
18	SOUND PROOF BOARD	1	CWH151172	←	
19	REACTOR	1	G0C193J00003	G0C193J00004	O
20	SOUND PROOF MATERIAL	1	CWG302315	←	
21	SOUND PROOF MATERIAL	1	CWG302316	←	
22	SENSOR - COMPLETE	1	CWA50C2205	←	
23	ELECTRONIC CONTROLLER-MAIN	1	CWA73C3232R	CWA73C3233R	O
24	CONTROL BOARD COVER (TOP-PCB)	1	CWH131264	←	
25	TERMINAL BOARD ASSY	1	CWA28K1021J	←	
26	SENSOR COMPLETE	1	CWA50C2391	←	O
27	TERMINAL COVER	1	CWH171039A	←	
28	CABINET SIDE PLATE-COMPLETE	1	CWE04C1159	←	
29	CABINET SIDE PLATE (L)	1	CWE041248A	←	
30	HANDLE	1	CWE161010	←	
31	WIRE NET	1	CWD041111A	←	
32	CABINET FRONT PLATE CO.	1	CWE06C1136	←	
33	CABINET TOP PLATE	1	CWE031014A	←	
34	PLATE - C.B.COVER	1	CWH131301	←	
35	CONTROL BOARD COVER COMP.	1	CWH13C1064	←	
36	L.TUBE	1	CWH5850080	←	
37	PACKING - L.TUBE	1	CWB81012	←	
38	OVER HEAT PROTECTOR COMPLETE	1	CWA14C1013	←	
39	ANTI-VIBRATION BUSHING	3	CWH50077	←	
40	CRANK CASE HEATER	1	CWA341049	←	
41	SOUND PROOF MATERIAL	1	CWG302314	←	

(NOTE)

- All parts are supplied from PHAAM, Malaysia (Vendor Code: 061).
- "O" marked parts are recommended to be kept in stock.