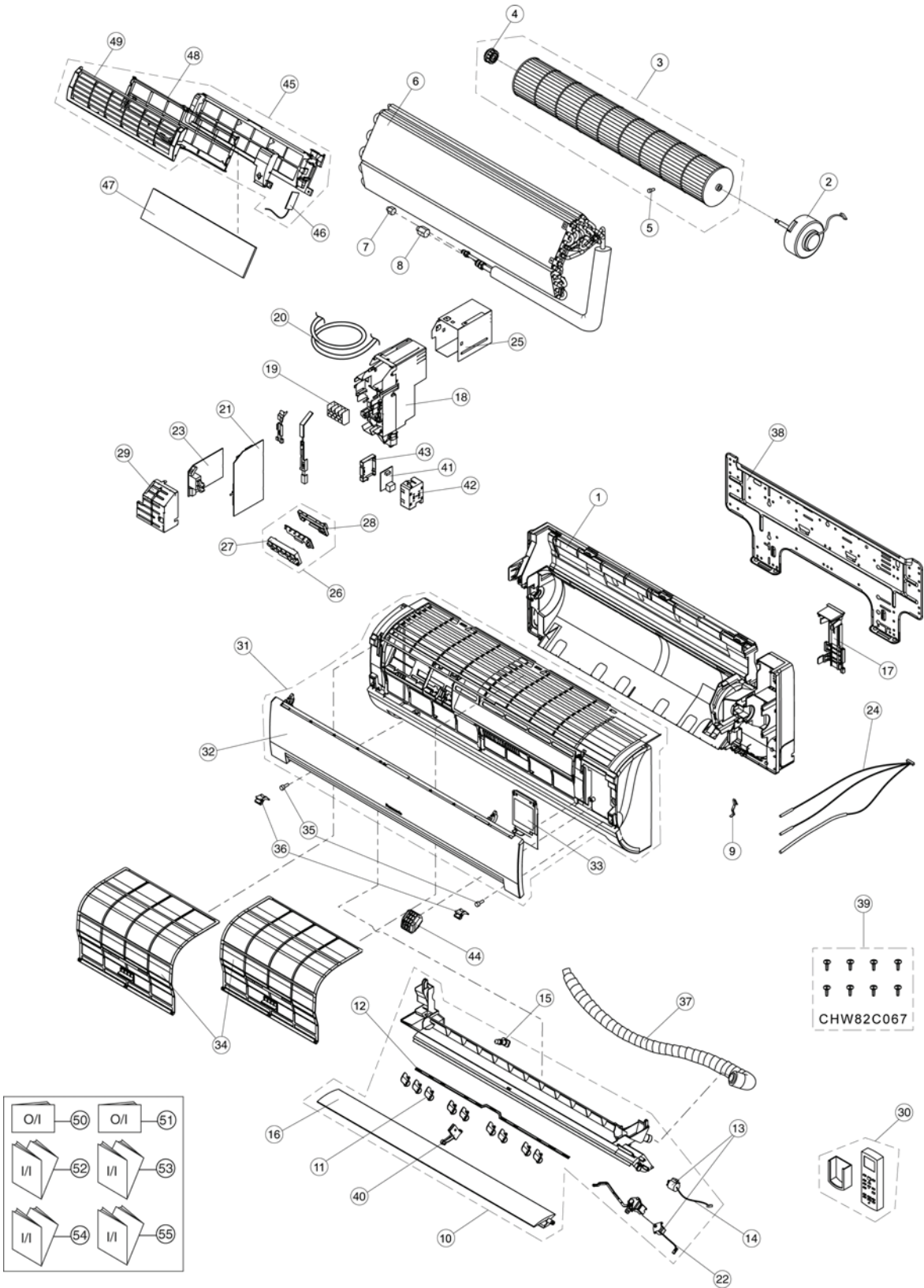


17 Exploded View and Replacement Parts List

17.1. Indoor Unit



Note

The above exploded view is for the purpose of parts disassembly and replacement. The non-numbered parts are not kept as standard service parts.

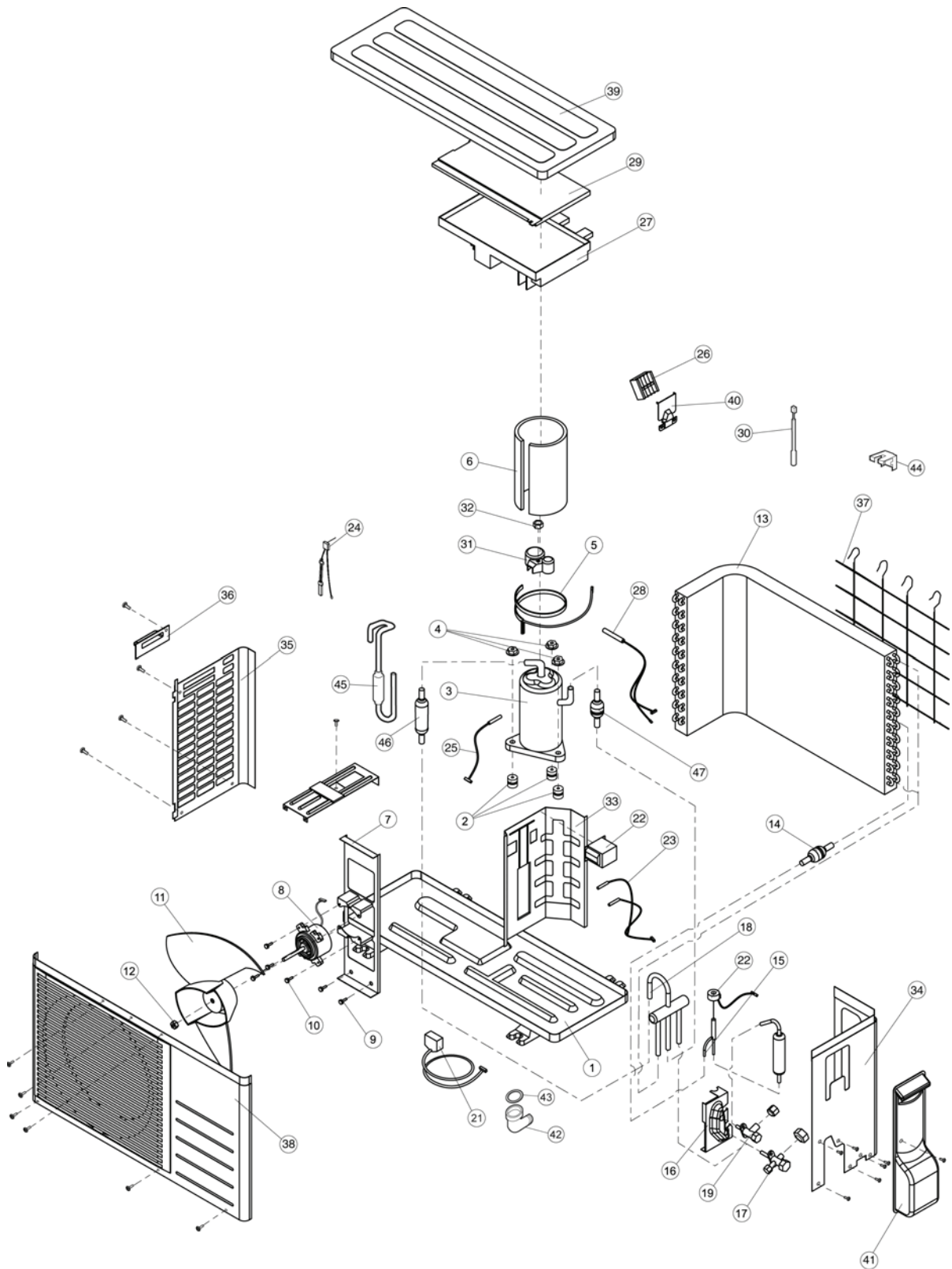
REF. NO.	PART NAME & DESCRIPTION	QTY.	CS-E9HKEA	CS-E12HKEA	REMARKS
1	CHASSY COMPLETE	1	CWD50C1568	←	
2	FAN MOTOR	1	ARW61F8P30AC	←	O
3	CROSS FLOW FAN COMPLETE	1	CWH02C1045	←	
4	BEARING ASSY	1	CWH64K007	←	
5	SCREW - CROSS FLOW FAN	1	CWH551146	←	
6	EVAPORATOR CO.	1	CWB30C2405	CWB30C2406	
7	FLARE NUT (1/4)	1	CWT251030	←	
8	FLARE NUT (3/8) (1/2)	1	CWT251031	CWT251032	
9	CLIP FOR SENSOR	1	CWH32143	←	
10	DISCHARGE GRILLE COMPLETE	1	CWE20C2343	←	
11	VERTICAL VANE	9	CWE241150	←	
12	CONNECTING BAR	1	CWE261072	←	
13	A.S.MOTOR, DC SINGLE 12V 300Ω	2	CWA98260+MJ	←	O
14	LEADWIRE CO - AIR SWING MOTOR	1	CWA67C4445	←	
15	CAP - DRAIN TRAY	1	CWH521096	←	
16	HORIZONTAL VANE	1	CWE241173	←	
17	BACK COVER CHASSIS	1	CWD932454	←	
18	CONTROL BOARD CASING	1	CWH102321	←	
19	TERMINAL BOARD COMPLETE	1	CWA28C2306	←	O
20	P.S CORD COMPLETE	1	CWA20C2587	←	
21	ELECTRONIC CONTROLLER - MAIN	1	CWA73C3230	CWA73C3231	O
22	LEAD WIRE - AIR SWING MOTOR	1	CWA67C3849	←	O
23	ELECTRONIC CONTROLLER - POWER	1	CWA745202	←	
24	SENSOR COMPLETE	1	CWA50C2404	←	O
25	CONTROL BOARD FRONT COVER	1	CWH131207	←	
26	INDICATOR COMPLETE	1	CWE39C1126	←	O
27	INDICATOR HOLDER	1	CWD932429	←	
28	INDICATOR HOLDER	1	CWD932430	←	
29	CONTROL BOARD FRONT COVER CO.	1	CWH13C1171	←	
30	REMOTE CONTROL COMPLETE	1	CWA75C3192	←	O
31	FRONT GRILLE CO.	1	CWE11C3973	←	O
32	INTAKE GRILLE COMPLETE	1	CWE22C1154	←	
33	GRILLE DOOR	1	CWE14C1011	←	
34	AIR FILTER	2	CWD001144	←	
35	SCREW - FRONT GRILLE	2	XTT4+16CFJ	←	
36	CAP - FRONT GRILLE	2	CWH521109	←	
37	DRAIN HOSE	1	CWH851063	←	
38	INSTALLATION PLATE	1	CWH361067	←	
39	BAG COMP. - INSTALLATION SCREW	1	CWH82C067	←	
40	FULCRUM	1	CWH621046	←	
41	ELECTRONIC CONTROLLER - IONIZER	1	CWA743675	CWH91C1013	O
42	CASING - IONIZER	1	CWD932464	CWA743675	
43	CASING - IONIZER	1	CWD932431	CWD00C1133	
44	ION GENERATOR	1	CWH94C0001	←	
45	SUPERSONIC AIR PURIFYING DEVICE	1	CWH91C1013	←	
46	ELEC. CONTROLLER - SUPERSONIC	1	CWA743874	←	O
47	SUPER ALLERU BUSTER FILTER	1	CWD00C1133	←	
48	FRAME FR AIR FILTER SUPERSONIC	1	CWD011026	←	
49	FRAME FR AIR FILTER SUPERSONIC	1	CWD011027	←	
50	OPERATION INSTRUCTION	1	CWF565937	←	
51	OPERATION INSTRUCTION	1	CWF565938	←	
52	INSTALLATION INSTRUCTION	1	CWF613396	←	
53	INSTALLATION INSTRUCTION	1	CWF613397	←	
54	INSTALLATION INSTRUCTION	1	CWF613398	←	

REF. NO.	PART NAME & DESCRIPTION	QTY.	CS-E9HKEA	CS-E12HKEA	REMARKS
55	INSTALLATION INSTRUCTION	1	CWF613399	←	

(NOTE)

- All parts are supplied from PHAAM, Malaysia (Vendor Code: 061).
- "O" marked parts are recommended to be kept in stock.

17.2. Outdoor Unit



Note

The above exploded view is for the purpose of parts disassembly and replacement.
The non-numbered parts are not kept as standard service parts.