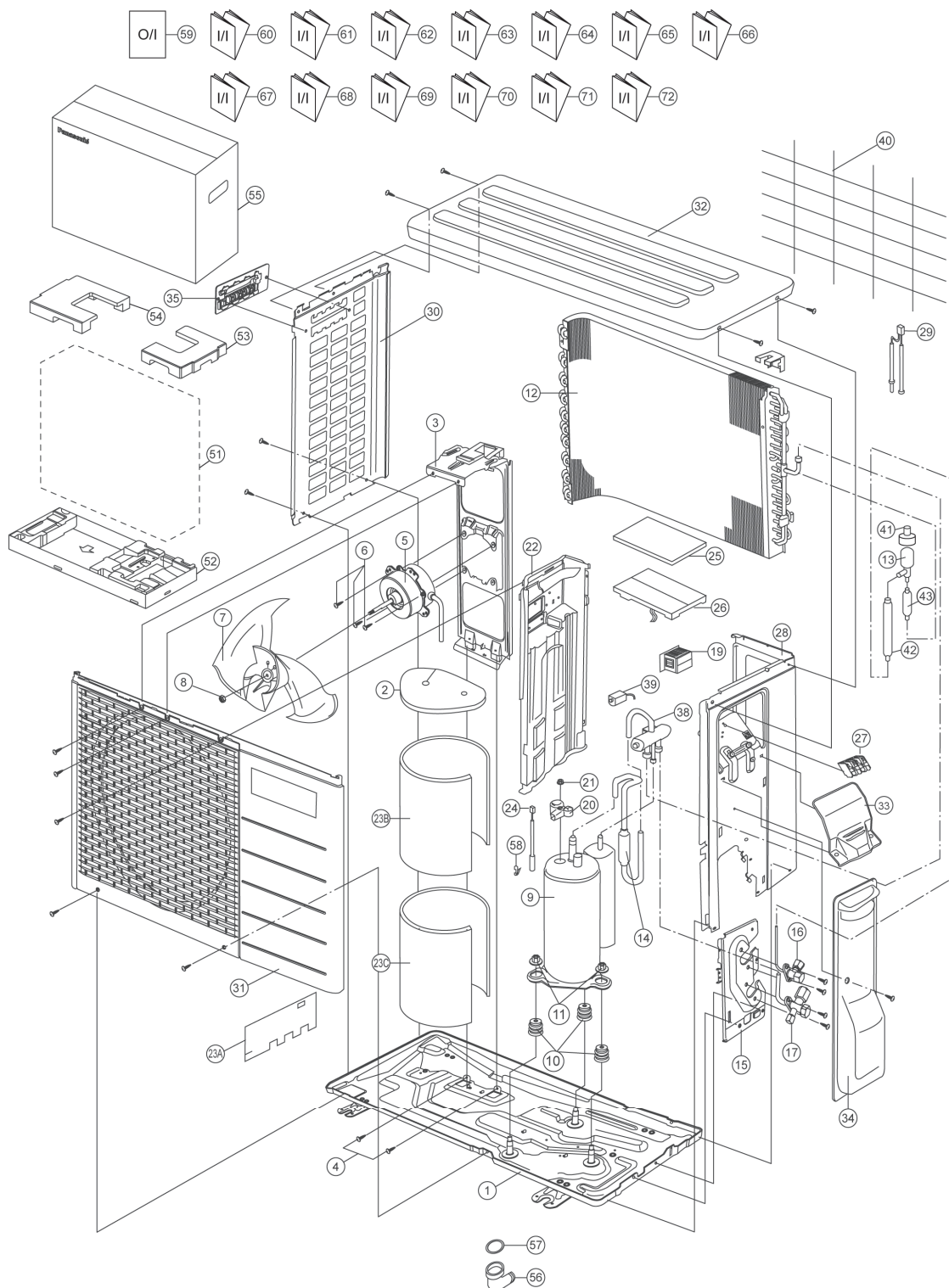


14. Exploded View and Replacement Parts List

14.1 Outdoor Unit

14.1.1 CU-E9PFE



Note

The above exploded view is for the purpose of parts disassembly and replacement.
The non-numbered parts are not kept as standard service parts.

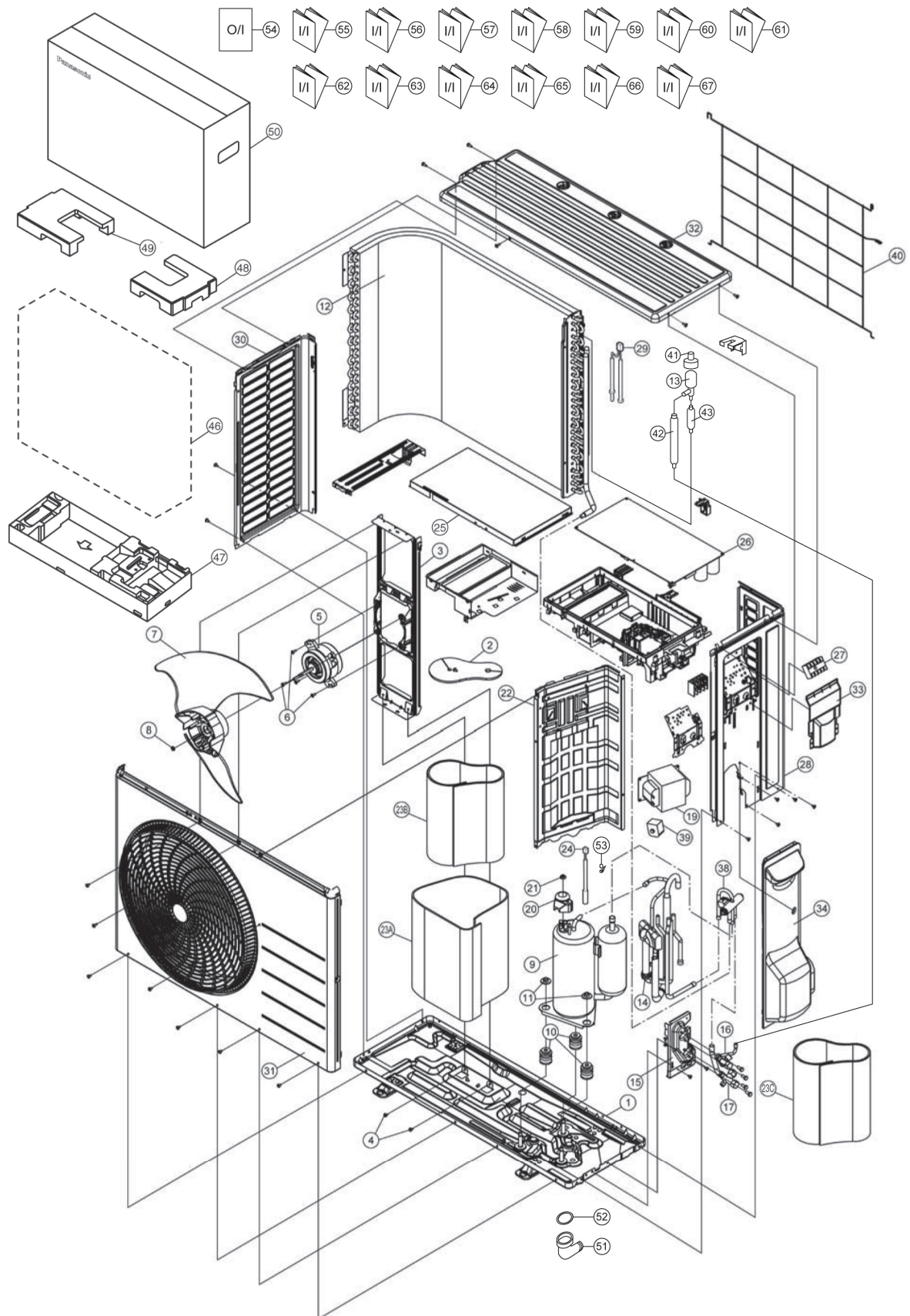
SAFETY	REF. NO.	PART NAME & DESCRIPTION	QTY.	CU-E9PFE	REMARK
	1	CHASSIS COMPLETE	1	CWD50K2073	
	2	SOUND PROOF MATERIAL	1	CWG302314	
	3	FAN MOTOR BRACKET	1	CWD541089	
	4	SCREW - FAN MOTOR BRACKET	2	CWH551217	
⚠	5	FAN MOTOR	1	ARS6411AC	O
	6	SCREW - FAN MOTOR MOUNT	4	CWH55252J	
	7	PROPELLER FAN ASSY	1	CWH03K1010	
	8	NUT - PROPELLER FAN	1	CWH56053J	
⚠	9	COMPRESSOR	1	5RS102XBC21	O
	10	ANTI - VIBRATION BUSHING	3	CWH50077	
	11	NUT - COMPRESSOR MOUNT	3	CWH56000J	
	12	CONDENSER	1	CWB32C3797	
	13	EXPANSION VALVE	1	CWB051055	
	14	DISCHARGE MUFFLER (4 W.VALVE)	1	CWB121010	
	15	HOLDER COUPLING	1	CWH351023	
	16	2-WAYS VALVE (LIQUID)	1	CWB021589	O
	17	3-WAY VALVE (GAS)	1	CWB011374	O
⚠	19	REACTOR	1	G0C103J00029	O
	20	TERMINAL COVER	1	CWH171039A	
	21	NUT - TERMINAL COVER	1	CWH7080300J	
	22	SOUND PROOF BOARD	1	CWH151172	
	23A	SOUND PROOF MATERIAL	1	CWG302315	
	23B	SOUND PROOF MATERIAL	1	CWG302316	
	23C	SOUND PROOF MATERIAL	1	CWG302317	
	24	SENSOR CO - COMP TEMP	1	CWA50C2205	O
	25	CONTROL BOARD COVER - TOP	1	CWH131264	
⚠	26	ELECTRONIC CONTROLLER - MAIN	1	CWA73C7759R	O
⚠	27	TERMINAL BOARD ASSY	1	CWA28K1110J	O
	28	CABINET SIDE PLATE CO.	1	CWE04C1116	
	29	SENSOR CO - AIR TEMP AND PIPE TEMP	1	CWA50C3080	O
	30	CABINET SIDE PLATE	1	CWE041248A	
	31	CABINET FRONT PLATE CO.	1	CWE06C1136	
	32	CABINET TOP PLATE	1	CWE031014A	
	33	PLATE - C. B. COVER TERMINAL	1	CWH131301	
	34	CONTROL BOARD COVER CO.	1	CWH13C1211	
	35	HANDLE	1	CWE161010	
	38	4-WAYS VALVE	1	CWB001037J	
⚠	39	V-COIL COMPLETE (4-WAY VALVE)	1	CWA43C2431	O
	40	WIRE NET	1	CWD041161A	O
⚠	41	V-COIL COMPLETE (EXP.VALVE)	1	CWA43C2257	
	42	DISCHARGE MUFFLER	1	CWB121021	
	43	STRAINER	1	CWB11094	
	51	BAG	1	CWG861078	
	52	BASE BOARD - COMPLETE	1	CWG62C1095	
	53	SHOCK ABSORBER (RIGHT)	1	CWG712969	
	54	SHOCK ABSORBER (LEFT)	1	CWG712970	
	55	C.C.CASE	1	CWG568356	
	56	L - TUBE	1	CWH5850080	
	57	PACKING - L. TUBE	1	CWB81012	
	58	HOLDER SENSOR	1	CWH32143	

SAFETY	REF. NO.	PART NAME & DESCRIPTION	QTY.	CU-E9PFE	REMARK
	59	OPERATING INSTRUCTION	1	CWF569015	
	60	INSTALLATION INSTRUCTION	1	CWF615933	
	61	INSTALLATION INSTRUCTION	1	CWF615934	
	62	INSTALLATION INSTRUCTION	1	CWF615935	
	63	INSTALLATION INSTRUCTION	1	CWF615936	
	64	INSTALLATION INSTRUCTION	1	CWF615937	
	65	INSTALLATION INSTRUCTION	1	CWF615938	
	66	INSTALLATION INSTRUCTION	1	CWF615939	
	67	INSTALLATION INSTRUCTION	1	CWF615940	
	68	INSTALLATION INSTRUCTION	1	CWF615941	
	69	INSTALLATION INSTRUCTION	1	CWF615942	
	70	INSTALLATION INSTRUCTION	1	CWF615943	
	71	INSTALLATION INSTRUCTION	1	CWF615944	
	72	INSTALLATION INSTRUCTION	1	CWF615945	

(NOTE)

- All parts are supplied from PAPAMY, Malaysia (Vendor Code: 00029488).
- “O” marked parts are recommended to be kept in stock.

14.1.2 CU-E12PFE



Note

The above exploded view is for the purpose of parts disassembly and replacement.
The non-numbered parts are not kept as standard service parts.

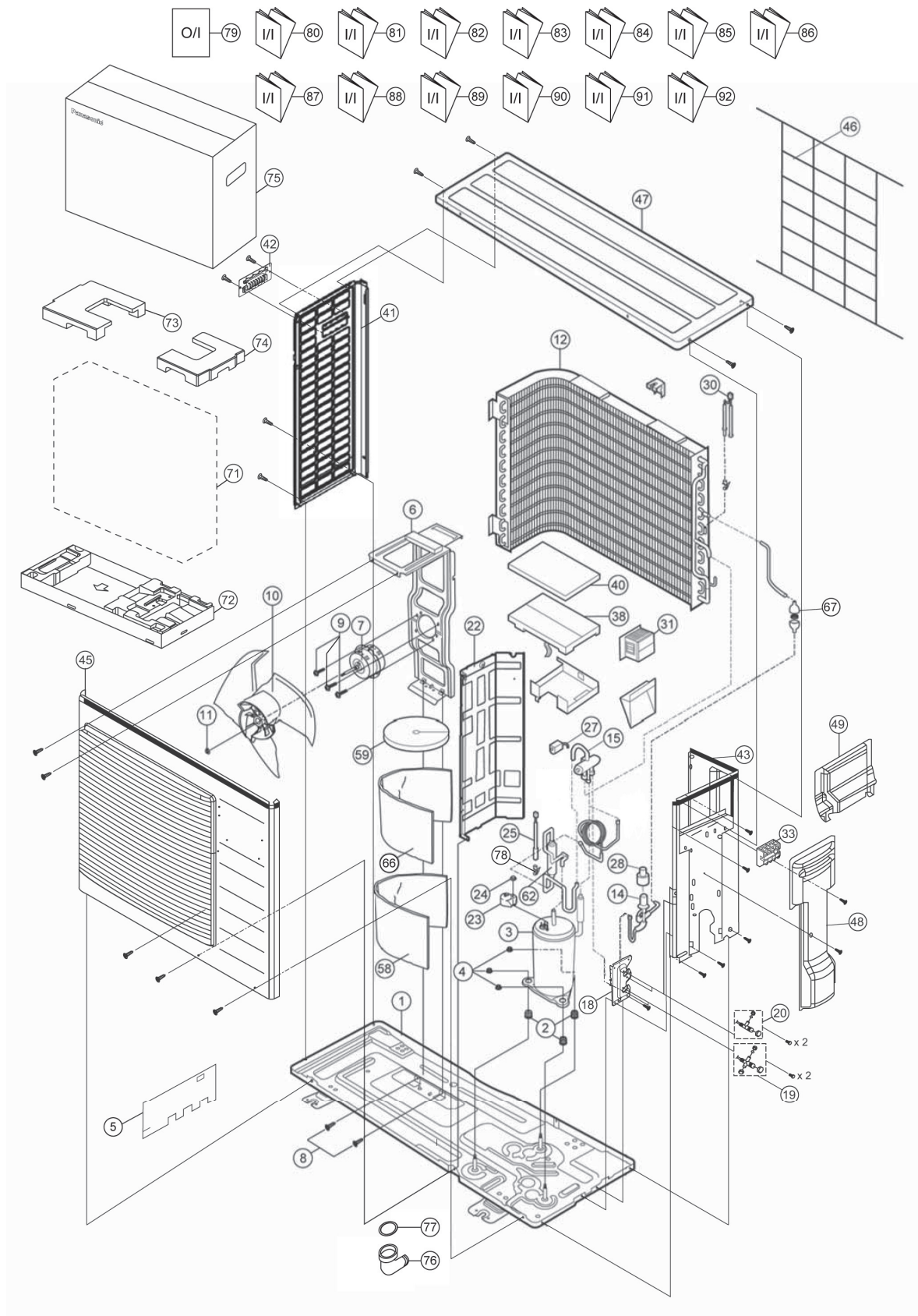
SAFETY	REF. NO.	PART NAME & DESCRIPTION	QTY.	CU-E12PFE	REMARK
	1	CHASSIS COMPLETE	1	CWD52K1277	
	2	SOUND PROOF MATERIAL	1	CWG302719	
	3	FAN MOTOR BRACKET	1	CWD541167	
	4	SCREW - FAN MOTOR BRACKET	2	CWH551217	
⚠	5	FAN MOTOR	1	ARS6411AC	O
	6	SCREW - FAN MOTOR MOUNT	4	CWH55252J	
	7	PROPELLER FAN ASSY	1	CWH03K1066	
	8	NUT - PROPELLER FAN	1	CWH56053J	
⚠	9	COMPRESSOR	1	5RS102XNA21	O
	10	ANTI - VIBRATION BUSHING	3	CWH50077	
	11	NUT - COMPRESSOR MOUNT	3	CWH56000J	
	12	CONDENSER	1	CWB32C3680	
	13	EXPANSION VALVE	1	CWB051055	
	14	DISCHARGE MUFFLER (4 W.VALVE)	1	CWB121010	
	15	HOLDER COUPLING	1	CWH351023	
	16	2-WAYS VALVE (LIQUID)	1	CWB021180J	O
	17	3-WAY VALVE (GAS)	1	CWB011374	O
⚠	19	REACTOR	1	G0C103J00029	O
	20	TERMINAL COVER	1	CWH171039A	
	21	NUT - TERMINAL COVER	1	CWH7080300J	
	22	SOUND PROOF BOARD	1	CWH151274	
	23A	SOUND PROOF MATERIAL	1	CWG302317	
	23B	SOUND PROOF MATERIAL	1	CWG302701	
	23C	SOUND PROOF MATERIAL	1	CWG302726	
	24	SENSOR CO - COMP TEMP	1	CWA50C2894	O
	25	CONTROL BOARD COVER - TOP	1	CWH131473	
⚠	26	ELECTRONIC CONTROLLER - MAIN	1	CWA73C7760R	O
⚠	27	TERMINAL BOARD ASSY	1	CWA28K1110J	O
	28	CABINET SIDE PLATE CO.	1	CWE04C1296	
	29	SENSOR CO - AIR TEMP AND PIPE TEMP	1	CWA50C3078	
	30	CABINET SIDE PLATE	1	CWE041580A	
	31	CABINET FRONT PLATE CO.	1	CWE06C1360	
	32	CABINET TOP PLATE	1	CWE031148A	
	33	PLATE - C. B. COVER TERMINAL	1	CWH131470A	
	34	CONTROL BOARD COVER CO.	1	CWH13C1253	
	38	4-WAYS VALVE	1	CWB001037J	O
⚠	39	V-COIL COMPLETE (4-WAY VALVE)	1	CWA43C2447	O
	40	WIRE NET	1	CWD041200A	
⚠	41	V-COIL COMPLETE (EXP.VALVE)	1	CWA43C2257	
	42	DISCHARGE MUFFLER	1	CWB121021	
	43	STRAINER	1	CWB11094	
	46	BAG	1	CWG861078	
	47	BASE BOARD - COMPLETE	1	CWG62C1144	
	48	SHOCK ABSORBER (RIGHT)	1	CWG713415	
	49	SHOCK ABSORBER (LEFT)	1	CWG713416	
	50	C.C.CASE	1	CWG568358	
	51	L - TUBE	1	CWH5850080	
	52	PACKING - L. TUBE	1	CWB81012	
	53	HOLDER SENSOR	1	CWH32143	
	54	OPERATING INSTRUCTION	1	CWF569015	

SAFETY	REF. NO.	PART NAME & DESCRIPTION	QTY.	CU-E12PFE	REMARK
	55	INSTALLATION INSTRUCTION	1	CWF615933	
	56	INSTALLATION INSTRUCTION	1	CWF615934	
	57	INSTALLATION INSTRUCTION	1	CWF615935	
	58	INSTALLATION INSTRUCTION	1	CWF615936	
	59	INSTALLATION INSTRUCTION	1	CWF615937	
	60	INSTALLATION INSTRUCTION	1	CWF615938	
	61	INSTALLATION INSTRUCTION	1	CWF615939	
	62	INSTALLATION INSTRUCTION	1	CWF615940	
	63	INSTALLATION INSTRUCTION	1	CWF615941	
	64	INSTALLATION INSTRUCTION	1	CWF615942	
	65	INSTALLATION INSTRUCTION	1	CWF615943	
	66	INSTALLATION INSTRUCTION	1	CWF615944	
	67	INSTALLATION INSTRUCTION	1	CWF615945	

(NOTE)

- All parts are supplied from PAPAMY, Malaysia (Vendor Code: 00029488).
- "O" marked parts are recommended to be kept in stock.

14.1.3 CU-E18PFE



Note

The above exploded view is for the purpose of parts disassembly and replacement.
The non-numbered parts are not kept as standard service parts.

SAFETY	REF. NO.	PART NAME & DESCRIPTION	QTY.	CU-E18PFE	REMARK
	1	CHASSIS COMPLETE	1	CWD52K1261	
	2	ANTI - VIBRATION BUSHING	3	CWH50077	
⚠	3	COMPRESSOR	1	5RD132XBA21	O
	4	NUT - COMPRESSOR MOUNT	3	CWH56000J	
	5	SOUND PROOF MATERIAL	1	CWG302744	
	6	FAN MOTOR BRACKET	1	CWD541153	
⚠	7	FAN MOTOR	1	ARW8401AC	O
	8	SCREW - FAN MOTOR BRACKET	2	CWH551217	
	9	SCREW - FAN MOTOR MOUNT	4	CWH551106J	
	10	PROPELLER FAN ASSY	1	CWH03K1065	
	11	NUT - PROPELLER FAN	1	CWH56053J	
	12	CONDENSER	1	CWB32C3369	
	14	EXPANSION VALVE	1	CWB051016J	
	15	4-WAYS VALVE	1	CWB001026J	
	18	HOLDER COUPLING	1	CWH351227	
	19	3-WAY VALVE (GAS)	1	CWB011338	O
	20	2-WAYS VALVE (LIQUID)	1	CWB021454	O
	22	SOUND PROOF BOARD	1	CWH151257	
	23	TERMINAL COVER	1	CWH171039A	
	24	NUT - TERMINAL COVER	1	CWH7080300J	
	25	SENSOR COMPLETE	1	CWA50C2185	O
⚠	27	V-COIL COMPLETE (4-WAY VALVE)	1	CWA43C2169J	O
⚠	28	V-COIL COMPLETE (EXP.VALVE)	1	CWA43C2257	O
	30	SENSOR - COMPLETE (AIR TEMP AND PIPE TEMP)	1	CWA50C2517	O
⚠	31	REACTOR	1	G0C203J00003	O
⚠	33	TERMINAL BOARD ASSY	1	CWA28K1110J	O
⚠	38	ELECTRONIC CONTROLLER - MAIN	1	CWA73C7761R	O
	40	CONTROL BOARD COVER - TOP	1	CWH131333	
	41	CABINET SIDE PLATE (LEFT)	1	CWE041520A	
	42	HANDLE	1	CWE161010	
	43	CABINET SIDE PLATE (RIGHT)	1	CWE041555A	
	45	CABINET FRONT PLATE CO.	1	CWE06K1077	
	46	WIRE NET	1	CWD041155A	
	47	CABINET TOP PLATE	1	CWE031083A	
	48	CONTROL BOARD COVER - COMPLETE	1	CWH13C1238	
	49	CONTROL BOARD COVER	1	CWH131409A	
	58	SOUND PROOF MATERIAL	1	CWG302636	
	59	SOUND PROOF MATERIAL	1	CWG302630	
	62	RECEIVER	1	CWB14011	
	66	SOUND PROOF MATERIAL	1	CWG302632	
	67	STRAINER	1	CWB11094	
	71	BAG	1	CWG861461	
	72	BASE BOARD - COMPLETE	1	CWG62C1131	
	73	SHOCK ABSORBER (LEFT)	1	CWG713217	
	74	SHOCK ABSORBER (RIGHT)	1	CWG713218	
	75	C.C.CASE	1	CWG568359	
	76	L - TUBE	1	CWH5850080	
	77	PACKING - L. TUBE	1	CWB81012	
	78	HOLDER SENSOR	1	CWH32143	
	79	OPERATING INSTRUCTION	1	CWF569015	

SAFETY	REF. NO.	PART NAME & DESCRIPTION	QTY.	CU-E18PFE	REMARK
	80	INSTALLATION INSTRUCTION	1	CWF615933	
	81	INSTALLATION INSTRUCTION	1	CWF615934	
	82	INSTALLATION INSTRUCTION	1	CWF615935	
	83	INSTALLATION INSTRUCTION	1	CWF615936	
	84	INSTALLATION INSTRUCTION	1	CWF615937	
	85	INSTALLATION INSTRUCTION	1	CWF615938	
	86	INSTALLATION INSTRUCTION	1	CWF615939	
	87	INSTALLATION INSTRUCTION	1	CWF615940	
	88	INSTALLATION INSTRUCTION	1	CWF615941	
	89	INSTALLATION INSTRUCTION	1	CWF615942	
	90	INSTALLATION INSTRUCTION	1	CWF615943	
	91	INSTALLATION INSTRUCTION	1	CWF615944	
	92	INSTALLATION INSTRUCTION	1	CWF615945	

(NOTE)

- All parts are supplied from PAPAMY, Malaysia (Vendor Code: 00029488).
- “O” marked parts are recommended to be kept in stock.