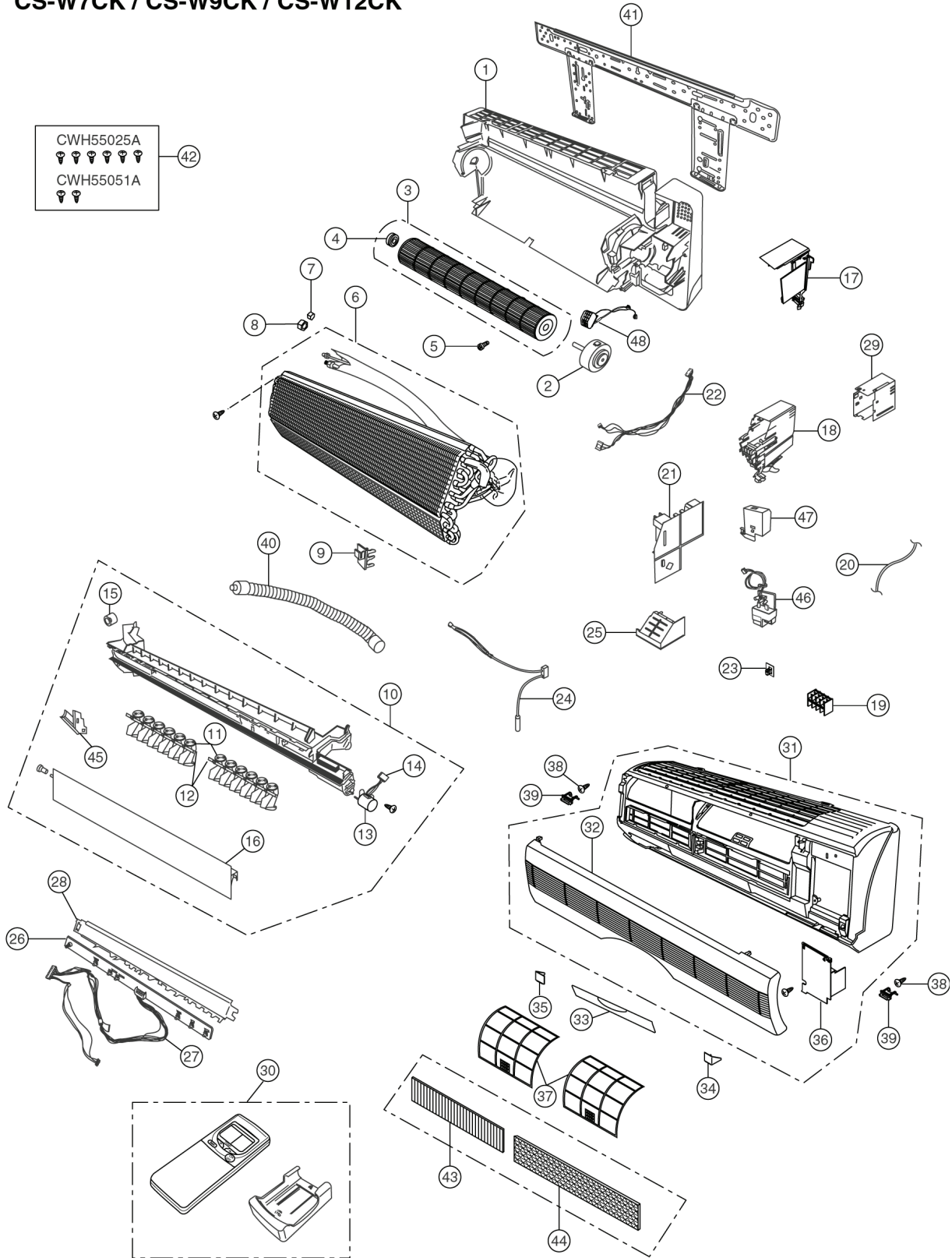


15 Exploded View

CS-W7CK / CS-W9CK / CS-W12CK



Note:

The above exploded view is for the purpose of parts disassembly and replacement.
The non-numbered parts are not kept as standard service parts.

16 Replacement Parts List

<Model: CS-W7CK / CS-W9CK / CS-W12CK>

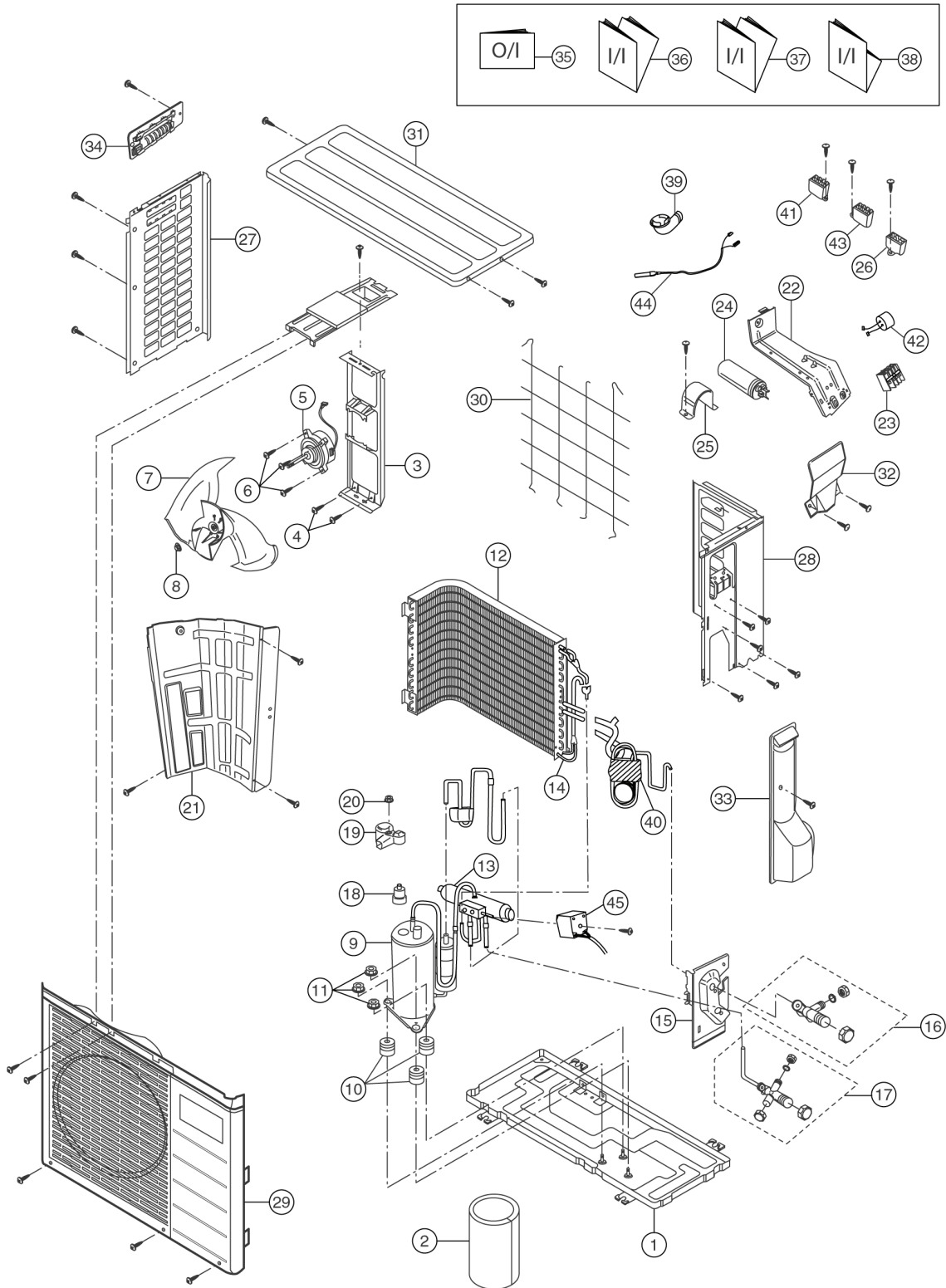
REF. NO.	PART NAME & DESCRIPTION	QTY.	CS-W7CKP	CS-W9CKP	CS-W12CKP	REMARKS
1	CHASSY COMPLETE	1	CWD50C1246	←	←	
2	FAN MOTOR	1	CWA921060	←	←	0
3	CROSS FLOW FAN COMPLETE	1	CWH02C1012	←	←	
4	BEARING ASS'Y	1	CWH64K007	←	←	
5	SCREW - CROSS FLOW FAN	1	CWH4580304	←	←	
6	EVAPORATOR	1	CWB30C1262	CWB30C1271	CWB30C1251	
7	FLARE NUT	1	CWH6002140 (1/4")	←	←	
8	FLARE NUT	1	CWT25005 (3/8")	←	CWT25007 (1/2")	
9	INTAKE AIR SENSOR HOLDER	1	CWH32142	←	←	
10	DISCHARGE GRILLE COMPLETE	1	CWE20C2101	←	←	
11	VERTICAL VANE	12	CWE241068	←	←	
12	CONNECTING BAR	2	CWE261024	←	←	
13	AIR SWING MOTOR	1	CWA98259	←	←	0
14	LEAD WIRE - AIR SWING MOTOR	1	CWA67C3977	←	←	
15	CAP - DRAIN TRAY	1	CWH52C1001	←	←	
16	HORIZONTAL VANE	1	CWE241070	←	←	
17	PARTICULAR PIECE	1	CWD932162	←	←	
18	CONTROL BOARD	1	CWH102103	←	←	
19	TERMINAL BOARD COMPLETE	1	CWA28C2162	←	CWA28C2163	0
20	POWER SUPPLY CORD	1	CWA20C2159	←	←	
21	ELECTRONIC CONTROLLER - MAIN	1	CWA742881	CWA742880	CWA742873	0
22	LEAD WIRE - FAN MOTOR	1	CWA67C3729	←	←	
23	ELECTRONIC CONTROLLER - RECEIVER	1	CWA73C1124	←	←	0
24	SENSOR COMPLETE	1	CWA50C2122	←	←	0
25	CONTROL BOARD FRONT COVER	1	CWH131090	←	←	
26	ELECTRONIC CONTROLLER - INDICATOR	1	CWE39C1064	←	←	0
27	LEAD WIRE - INDICATOR	1	CWA67C3637	←	←	
28	INDICATOR HOLDER	1	CWD932163	←	←	
29	CONTROL BOARD TOP COVER	1	CWH131091	←	←	
30	REMOTE CONTROL COMPLETE	1	CWA75C2294	←	←	0
31	FRONT GRILLE COMPLETE	1	CWE11C2756	←	←	
32	INTAKE GRILLE	1	CWE22C1081	←	←	
33	CONTROL PANEL	1	CWE312274	←	←	
34	DECORATION BASE (R)	1	CWE351067	←	←	
35	DECORATION BASE (L)	1	CWE351068	←	←	
36	GRILLE DOOR	1	CWE141033	←	←	
37	AIR FILTER	2	CWD001047	←	←	
38	SCREW - FRONT GRILLE	2	XTN4+16C	←	←	
39	CAP - FRONT GRILLE	2	CWH521062	←	←	
40	DRAIN HOSE	1	CWH85285	←	←	
41	INSTALLATION PLATE	1	CWH36K1006	←	←	
42	BAG COMPLETE - INSTALLATION SCREW	1	CWH82C067	←	←	
43	AIR PURIFYING FILTER	1	CWMD00C0001	←	←	0
44	TRIPLE DEODORIZING FILTER	1	CWMD00C0004	←	←	0
45	FULCRUM	1	CWH621013	←	←	
46	ELECTRONIC CONTROLLER - IONIZER	1	CWA743099	←	←	
47	CASING - IONIZER	1	CWD932228	←	←	
48	ION GENERATOR	1	CWH94C0001	←	←	

(Note)

- All parts are supplied from MAICO, Malaysia (Vendor Code: 061).
- "O" marked parts are recommended to be kept in stock.

17 Exploded View

CU-W7CK / CU-W9CK / CU-W12CK



Note:

The above exploded view is for the purpose of parts disassembly and replacement.

The non-numbered parts are not kept as standard service parts.

18 Replacement Parts List

<Model: CU-W7CK / CU-W9CK / CU-W12CK>

REF. NO.	PART NAME & DESCRIPTION	QTY.	CU-W7CKP5	CU-W9CKP5	CU-W12CKP5	REMARKS
1	CHASSY ASS'Y	1	CWD50K2073	←	CWD50K2074	
2	SOUND PROOF MATERIAL	1	CWG302088	←	←	
3	FAN MOTOR BRACKET	1	CWD541030	←	←	
4	SCREW - FAN MOTOR BRACKET	2	CWH55413	←	←	
5	FAN MOTOR	1	CWA951119	←	CWA951121	0
6	SCREW - FAN MOTOR MOUNT	3	CWH55406	←	←	
7	PROPELLER FAN ASS'Y	1	CWH03K1006	←	←	
8	NUT - PROPELLER FAN	1	CWH56053	←	←	
9	COMPRESSOR	1	GB080PAA	GB102PAA	GB134PAA	0
10	ANTI - VIBRATION BUSHING	3	CWH501024	←	←	
11	NUT - COMPRESSOR MOUNT	3	CWH56000	←	CWH4582065	
12	CONDENSER	1	CWB32C1116	←	CWB32C1108	
13	4-WAY VALVE	1	CWB001011	←	←	
14	STRAINER	1	CWB11025	←	←	
15	HOLDER COUPLING ASS'Y	1	CWH351023	←	←	
16	2-WAY VALVE (LIQUID)	1	CWB021057	←	←	0
17	3-WAY VALVE (GAS)	1	CWB011063	←	CWB011062	0
18	OVERLOAD PROTECTOR	1	CWA121058	CWA121059	CWA121057	0
19	TERMINAL COVER	1	CWH171021	←	←	
20	NUT - TERMINAL COVER	1	CWH561020	←	←	
21	SOUND PROOF BOARD	1	CWH151022	←	CWH151023	
22	CONTROL BOARD	1	CWH102102	←	←	
23	TERMINAL BOARD ASS'Y	1	CWA28K216	←	←	
24	CAPACITOR - COMPRESSOR	1	DS371256CPNA (25µF, 370VAC)	DS371306CPNA (30µF, 370VAC)	DS371356CPNA (35µF, 370VAC)	0
25	HOLDER CAPACITOR	1	CWH30057	←	←	
26	CAPACITOR - FAN MOTOR	1	CWA31618 (2.0µF, 450VAC)	←	←	0
27	CABINET SIDE PLATE (L)	1	CWE041031A	←	←	
28	CABINET SIDE PLATE (R)	1	CWE041032A	←	CWE041033A	
29	CABINET FRONT PLATE	1	CWE06K1034	←	←	
30	WIRE NET	1	CWD041021A	←	CWD041023A	
31	CABINET TOP PLATE	1	CWE031014A	←	←	
32	PLATE - C. B. COVER	1	CWH131088	←	←	
33	CONTROL BOARD COVER	1	CWH131092	←	←	
34	HANDLE	1	CWE161010	←	←	
35	OPERATION INSTRUCTIONS	1	CWF563838	←	←	
36	INSTALLATION INSTRUCTIONS (ENGLISH, FRANCAIS, ESPANOL & DEUTSCH)	1	CWF612304	←	←	
37	INSTALLATION INSTRUCTIONS (ITALIANO, NEDERLANDS, PORTUGUES & GREEK)	1	CWF612305	←	←	
38	INSTALLATION INSTRUCTIONS (RUSSIA)	1	CWF612306	←	←	
39	L-TUBE	1	CWH5850080	←	←	
40	TUBE ASS'Y (CHECK VALVE/CAPILLARY)	1	CWT01C2653	CWT01C2654	CWT01C2648	
41	ELECTRO MAGNETIC SWITCH	1	CWA00059	←	←	
42	ELECTROLYTIC CAPACITOR	1	CWA32C067	←	←	
43	ELECTRO MAGNETIC SWITCH	1	K6C2C7A00001	←	K6A2C7A00002	
44	TEMPERATURE RELAY	1	CWA14C1009	←	←	
45	V-COIL COMPLETE	1	CWA43C2069	←	←	

(Note)

- All parts are supplied from MAICO, Malaysia (Vendor Code: 061).
- "O" marked parts are recommended to be kept in stock.