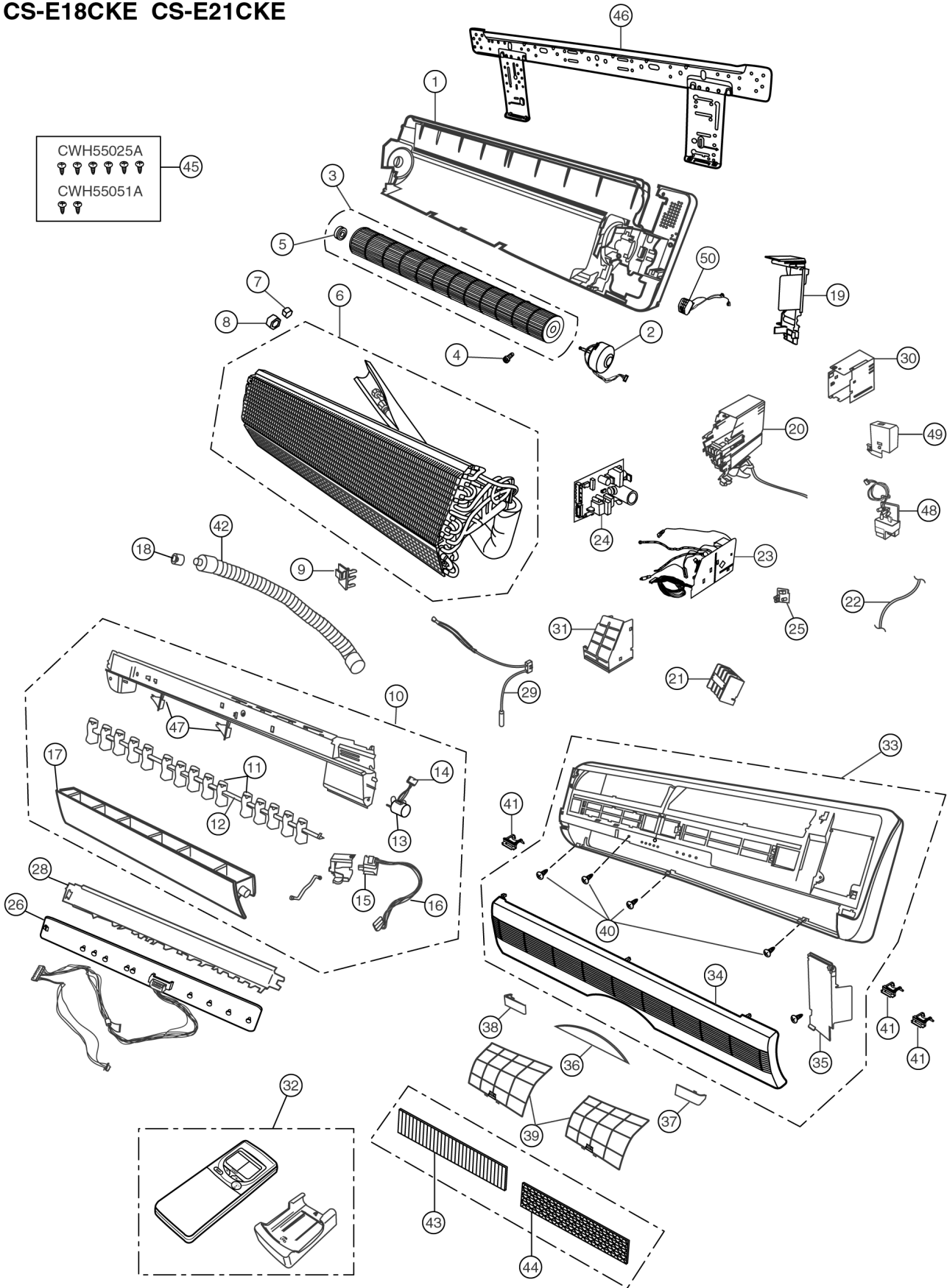


# 14 Exploded View

CS-E18CKE CS-E21CKE



Note:  
 The above exploded view is for the purpose of parts disassembly and replacement.  
 The non-numbered parts are not kept as standard service parts.

# 15 Replacement Parts List

<Model: CS-E18CKE & CS-E21CKE>

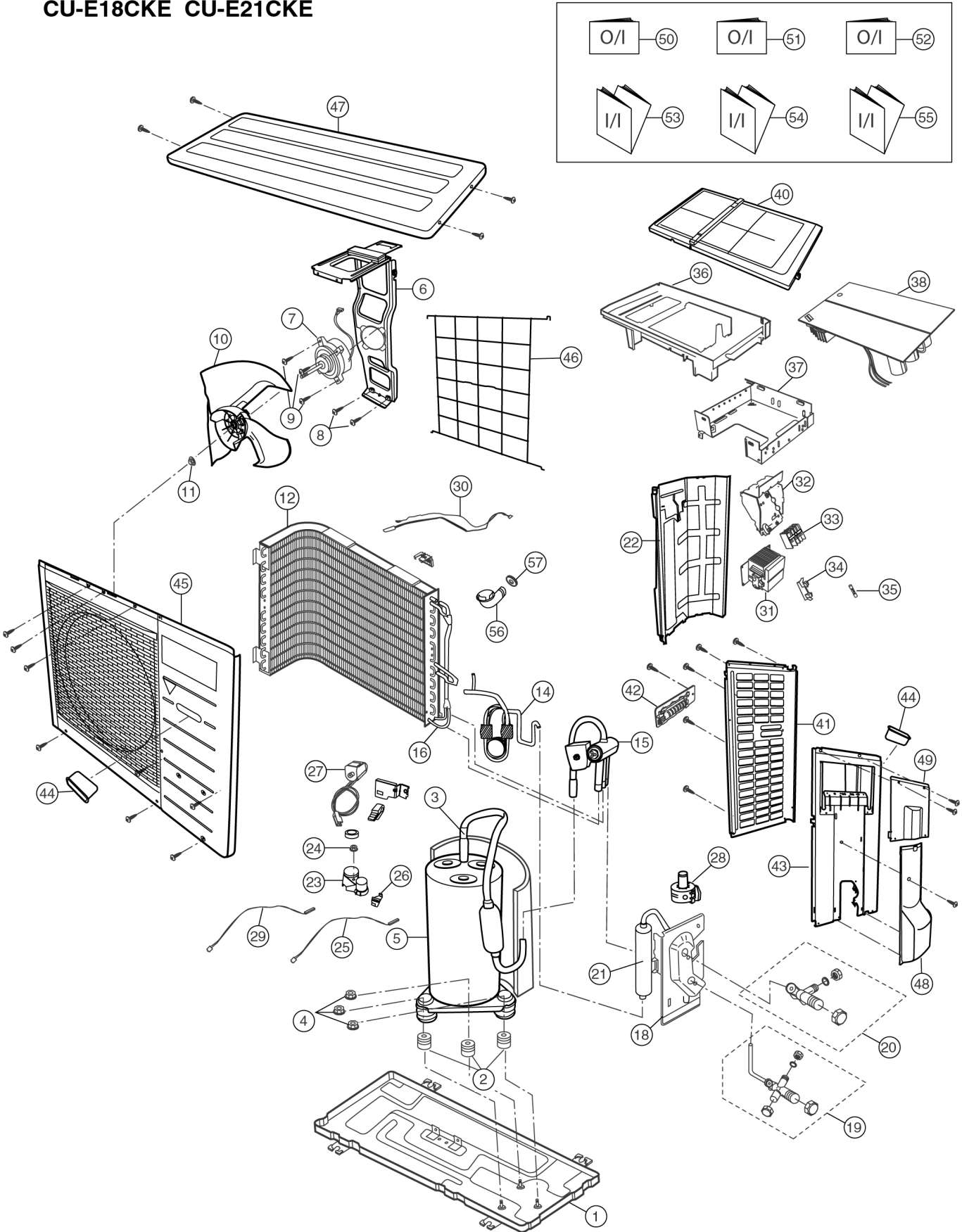
REF. NO.	PART NAME & DESCRIPTION	QTY.	CS-E18CKE	CS-E21CKE	REMARKS
1	CHASSY COMPLETE	1	CWD50C1293	←	
2	FAN MOTOR	1	CWA981056	←	0
3	CROSS FLOW FAN COMPLETE	1	CWH02C1010	←	
4	SCREW - CROSS FLOW FAN	1	CWH4580304	←	
5	BEARING ASS'Y	1	CWH64K007	←	
6	EVAPORATOR	1	CWB30C1387	CWB30C1336	
7	FLARE NUT	1	CWT25086 (7/16")	←	
8	FLARE NUT	1	CWT25096 (3/4")	←	
9	INTAKE AIR SENSOR HOLDER	1	CWH32142	←	
10	DISCHARGE GRILLE COMPLETE	1	CWE20C2240	←	
11	VERTICAL VANE	15	CWE241088	←	
12	CONNECTING BAR	2	CWE261025	←	
13	AIR SWING MOTOR	1	CWA98260	←	0
14	LEAD WIRE - AIR SWING MOTOR	1	CWA67C3849	←	
15	AIR SWING MOTOR	1	CWA981041	←	0
16	LEAD WIRE - AIR SWING MOTOR	1	CWA67C3731	←	
17	HORIZONTAL VANE	1	CWE241136	←	
18	CAP - DRAIN TRAY	1	CWH52C1001	←	
19	PARTICULAR PIECE	1	CWD932162	←	
20	CONTROL BOARD	1	CWH102103	←	
21	TERMINAL BOARD COMPLETE	1	CWA28C2128	←	0
22	POWER SUPPLY CORD	1	CWA20C2328	←	
23	ELECTRONIC CONTROLLER - MAIN	1	CWA73C1456	CWA73C1457	0
24	ELECTRONIC CONTROLLER - POWER	1	CWA743304	←	0
25	P.C.B. RECEIVER	1	CWA742724	←	
26	ELECTRONIC CONTROLLER - INDICATOR	1	CWE39C1102	←	0
28	INDICATOR HOLDER	1	CWD932163	←	
29	SENSOR COMPLETE	1	CWA50C2122	←	0
30	CONTROL BOARD TOP COVER	1	CWH131091	←	
31	CONTROL BOARD FRONT COVER	1	CWH131090	←	
32	REMOTE CONTROL COMPLETE	1	CWA75C2401	←	0
33	FRONT GRILLE COMPLETE	1	CWE11C2843	←	
34	INTAKE GRILLE	1	CWE22C1105	←	
35	GRILLE DOOR	1	CWE141033	←	
36	CONTROL PANEL	1	CWE312291	←	
37	DECORATION BASE (R)	1	CWE351067	←	
38	DECORATION BASE (L)	1	CWE351068	←	
39	AIR FILTER	2	CWD001049	←	
40	SCREW - FRONT GRILLE	4	XTT4+16C	←	
41	CAP - FRONT GRILLE	3	CWH521062	←	
42	DRAIN HOSE	1	CWH85285	←	
43	AIR PURIFYING FILTER	1	CWMD00C0001	←	0
44	TRIPLE DEODORIZING FILTER	1	CWMD00C0004	←	0
45	BAG COMPLETE - INSTALLATION SCREW	1	CWH82C067	←	
46	INSTALLATION PLATE	1	CWH36K1007	←	
47	FULCRUM	2	CWH621013	←	
48	ELECTRONIC CONTROLLER - IONIZER	1	CWA743099	←	0
49	CASING - IONIZER	1	CWD932228	←	
50	ION - GENERATOR	1	CWH94C0001	←	

(Note)

- All parts are supplied from MAICO, Malaysia (Vendor Code: 061).
- "O" marked parts are recommended to be kept in stock.

# 16 Exploded View

CU-E18CKE CU-E21CKE



Note:  
The above exploded view is for the purpose of parts disassembly and replacement.  
The non-numbered parts are not kept as standard service parts.

# 17 Replacement Parts List

<Model: CU-E18CKR & CU-E21CKR>

REF NO.	DESCRIPTION & NAME	QTY.	CU-E18CKR	CU-E21CKR	REMARKS
1	CHASSY ASSY	1	CWD50K2085	←	
2	ANTI-VIBRATION BUSHING	3	CWH50077	←	
3	COMPRESSOR	1	5CS130XAC03	←	O
4	NUT-COMPRESSOR MOUNT	3	CWH56000	←	
5	SOUND PROOF MATERIAL	1	CWG302111	←	
6	FAN MOTOR BRACKET	1	CWD541054	←	
7	FAN MOTOR	1	CWA981110	←	O
8	SCREW - FAN MOTOR BRACKET	2	CWH551060	←	
9	SCREW - FAN MOTOR MOUNT	3	CWH551109	←	
10	PROPELLER FAN ASSY	1	CWH03K1016	←	
11	NUT - PROPELLER FAN	1	CWH56053	←	
12	CONDENSER	1	CWB32C1317R	CWB32C1324R	
14	TUBE ASS'Y COMPLETE (VALVE/RECEIVER)	1	CWT01C2900	CWT01C2901	O
15	4 WAYS VALVE	1	CWB001027	←	
16	STRAINER	1	CWB11094	←	
18	HOLDER - COUPLING	1	CWH351035	←	
19	3 WAYS VALVE (GAS)	1	CWB011170	←	O
20	2 WAYS VALVE (LIQUID)	1	CWB021135	←	O
21	DRYER	1	CWB101015	←	O
22	SOUND PROOF BOARD	1	CWH151050	←	
23	TERMINAL COVER	1	CWH171001	←	
24	NUT-TERMINAL COVER	1	CWH7080300	←	
25	SENSOR COMPLETE (COMP. TOP)	1	CWA50C2168	←	
26	HOLDER SENSOR	3	CWH321010	←	
27	V-COIL COMPLETE (4-WAYS VALVE)	1	CWA43C2098	←	
28	V-COIL COMPLETE (EXPAND VALVE)	1	CWA43C2058	←	
29	SENSOR COMPLETE (COMP. DISC.)	1	CWA50C2169	←	
30	SENSOR COMPLETE	1	CWA50C2120	←	
31	REACTOR	1	CWA421069	←	
32	CONTROL BOARD (SIDE)	1	CWH102122	←	
33	TERMINAL BOARD ASSY	1	CWA28K1036	←	
34	FUSE HOLDERS	1	-	-	
35	FUSE	1	-	-	
36	CONTROL BOARD (TOP)	1	CWH102204	←	
37	CONTROL BOARD (BOTTOM)	1	CWH102205	←	
38	ELECTRONIC CONTROLLER - MAIN	1	CWA73C1464	CWA73C1465	
40	CONTROL BOARD COVER (TOP)	1	CWH131167	←	
41	CABINET SIDE PLATE (LEFT)	1	CWE041082A	←	
42	HANDLE	1	CWE161010	←	
43	CABINET SIDE PLATE (RIGHT)	1	CWE041083A	←	
44	HANDLE	1	-	-	
45	CABINET FRONT PLATE CO.	1	CWE06K1043	←	
46	WIRE NET	1	CWD041041A	←	
47	CABINET TOP PLATE	1	CWE031031A	←	
48	CONTROL BOARD COVER (BOTTOM)	1	CWH131168	←	
49	CONTROL BOARD COVER (TOP)	1	CWH131169A	←	
50	OPERATING INSTRUCTION	1	CWF563989	←	
51	OPERATING INSTRUCTION	1	CWF563990	←	
52	OPERATING INSTRUCTION	1	CWF563991	←	
53	INSTALLATION INSTRUCTION	1	CWF612433	←	
54	INSTALLATION INSTRUCTION	1	CWF612434	←	
55	INSTALLATION INSTRUCTION	1	CWF612435	←	
56	DRAIN HOSE	1	CWH5850080	←	
57	PACKING	1	CWB81012	←	

(Note)

- All parts are supplied from MAICO, Malaysia (Vendor Code: 061).
- "O" marked parts are recommended to be kept in stock.