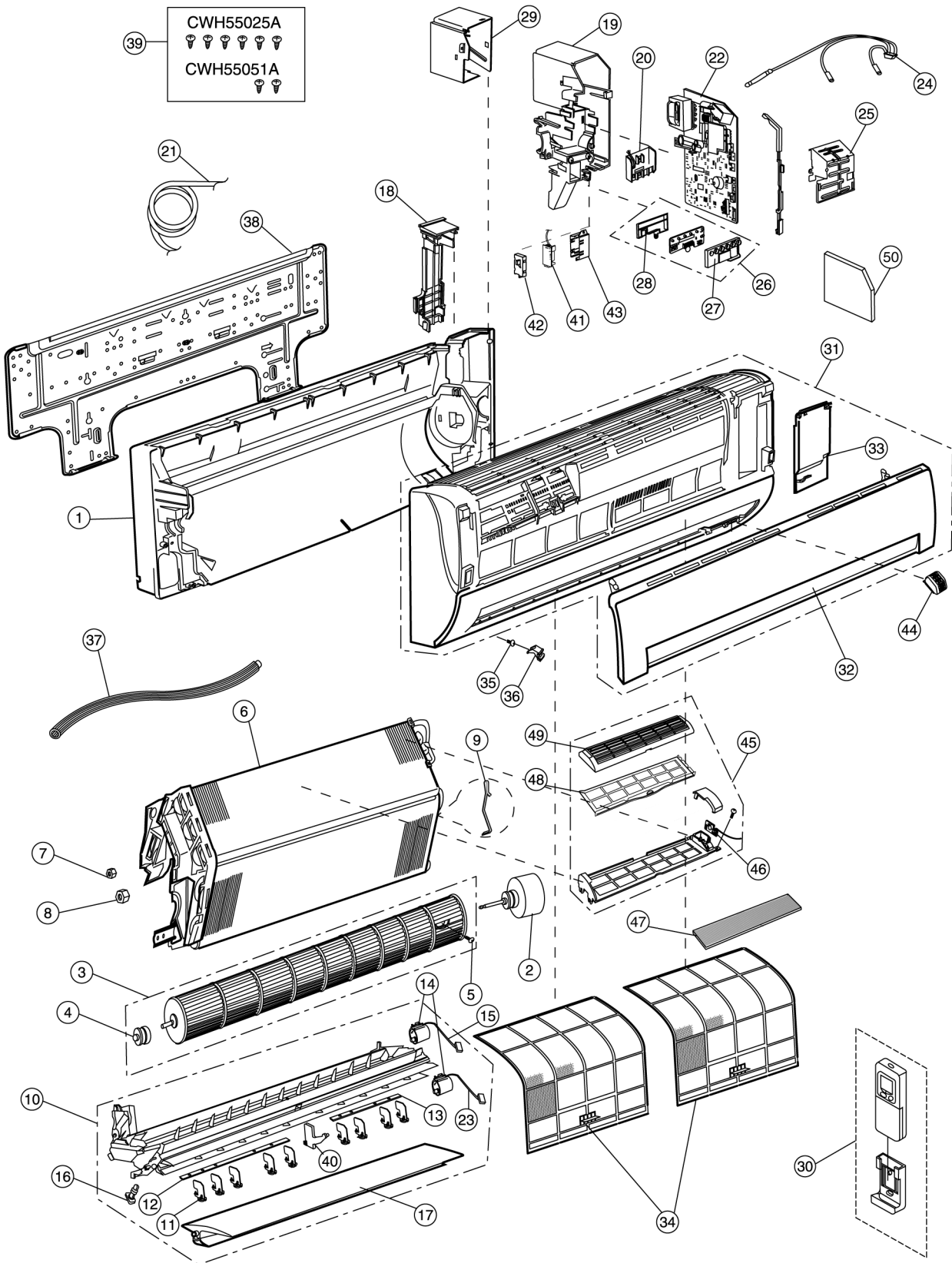


# 17 Exploded View and Replacement Parts List

## 17.1. CS-E15EKEA



Note:  
 The above exploded view is for the purpose of parts disassembly and replacement.  
 The non-numbered parts are not kept as standard service parts.

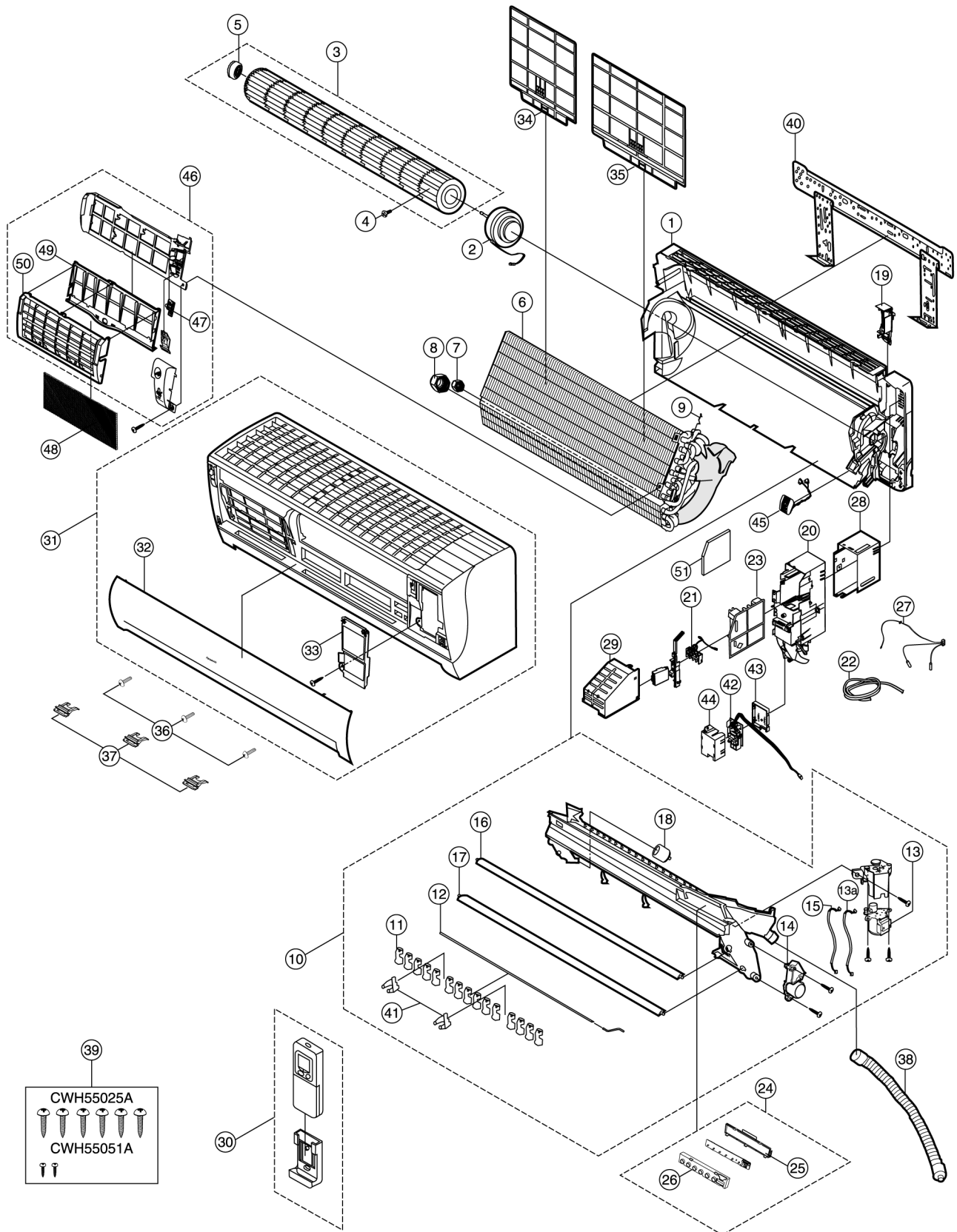
<Model: CS-E15EKEA>

REF NO.	PART NAME & DESCRIPTION	QTY.	CS-E15EKEA	REMARKS
1	CHASSY COMPLETE	1	CWD50C1431	
2	FAN MOTOR	1	CWA981149J	O
3	CROSS FLOW FAN COMPLETE	1	CWH02C1045	
4	BEARING ASS'Y	1	CWH64K007	
5	SCREW - CROSS FLOW FAN	1	CWH551146	
6	EVAPORATOR	1	CWB30C1833	
7	FLARE NUT	1	CWT251030 (1/4")	
8	FLARE NUT	1	CWT251032 (1/2")	
9	HOLDER SENSOR	1	CWH32143	
10	DISCHARGE GRILLE COMPLETE	1	CWE20C2343	
11	VERTICAL VANE	9	CWE241150	
12	CONNECTING BAR	1	CWE261072	
13	CONNECTING BAR	1	CWE261065	
14	AIR SWING MOTOR	2	CWA98260+MJ	O
15	LEAD WIRE - AIR SWING MOTOR	1	CWA67C3849	
16	CAP - DRAIN TRAY	1	CWH521096	
17	HORIZONTAL VANE	1	CWE24C1155	
18	BACK COVER CHASSIS	1	CWD932454	
19	CONTROL BOARD CASING	1	CWH102289	
20	TERMINAL BOARD COMPLETE	1	CWA28C2069	O
21	POWER SUPPLY CORD	1	CWA20C2478	
22	ELECTRONIC CONTROLLER - MAIN	1	CWA73C2016	O
23	LEAD WIRE - AIR SWING MOTOR	1	CWA67C3977	O
24	SENSOR COMPLETE	1	CWA50C2321	O
25	CONTROL BOARD FRONT COVER	1	CWH13C1120	
26	INDICATOR COMPLETE	1	CWE39C1126	O
27	INDICATOR HOLDER	1	CWD932429	
28	INDICATOR HOLDER	1	CWD932430	
29	CONTROL BOARD TOP COVER	1	CWH131207	
30	REMOTE CONTROL COMPLETE	1	CWA75C2807	O
31	FRONT GRILLE COMPLETE	1	CWE11C3138	O
32	INTAKE GRILLE	1	CWE22C1154	
33	GRILLE DOOR	1	CWE141073	
34	AIR FILTER	2	CWD001144	
35	SCREW - FRONT GRILLE	2	XTT4+16CFJ	
36	CAP - FRONT GRILLE	2	CWH521109	
37	DRAIN HOSE	1	CWH851063	
38	INSTALLATION PLATE	1	CWH361067	
39	BAG COMPLETE - INSTALLATION SCREW	1	CWH82C067	
40	FULCRUM	1	CWH621046	
41	ELECTRONIC CONTROLLER - IONIZER	1	CWA743675	O
42	CASING - IONIZER	1	CWD932464	
43	CASING - IONIZER	1	CWD932431	
44	ION GENERATOR	1	CWH94C0001	
45	SUPERSONIC AIR PURIFYING DEVICE	1	CWH91C1013	
46	ELECTRONIC CONTROLLER SUPERSONIC	1	CWA743874	O
47	SUPER ALLERU BUSTER FILTER	1	CWD00C1133	
48	FRAME FR AIR FILTER SUPERSONIC	1	CWD011027	
49	FRAME FR AIR FILTER SUPERSONIC	1	CWD011026	
50	ELECTRONIC CONTROLLER - POWER	1	CWA744060	O

(Note)

- All parts are supplied from PHAAM, Malaysia (Vendor Code: 061).
- "O" marked parts are recommended to be kept in stock.

## 17.2. CS-E18EKEA CS-E21EKEA



Note:  
 The above exploded view is for the purpose of parts disassembly and replacement.  
 The non-numbered parts are not kept as standard service parts.

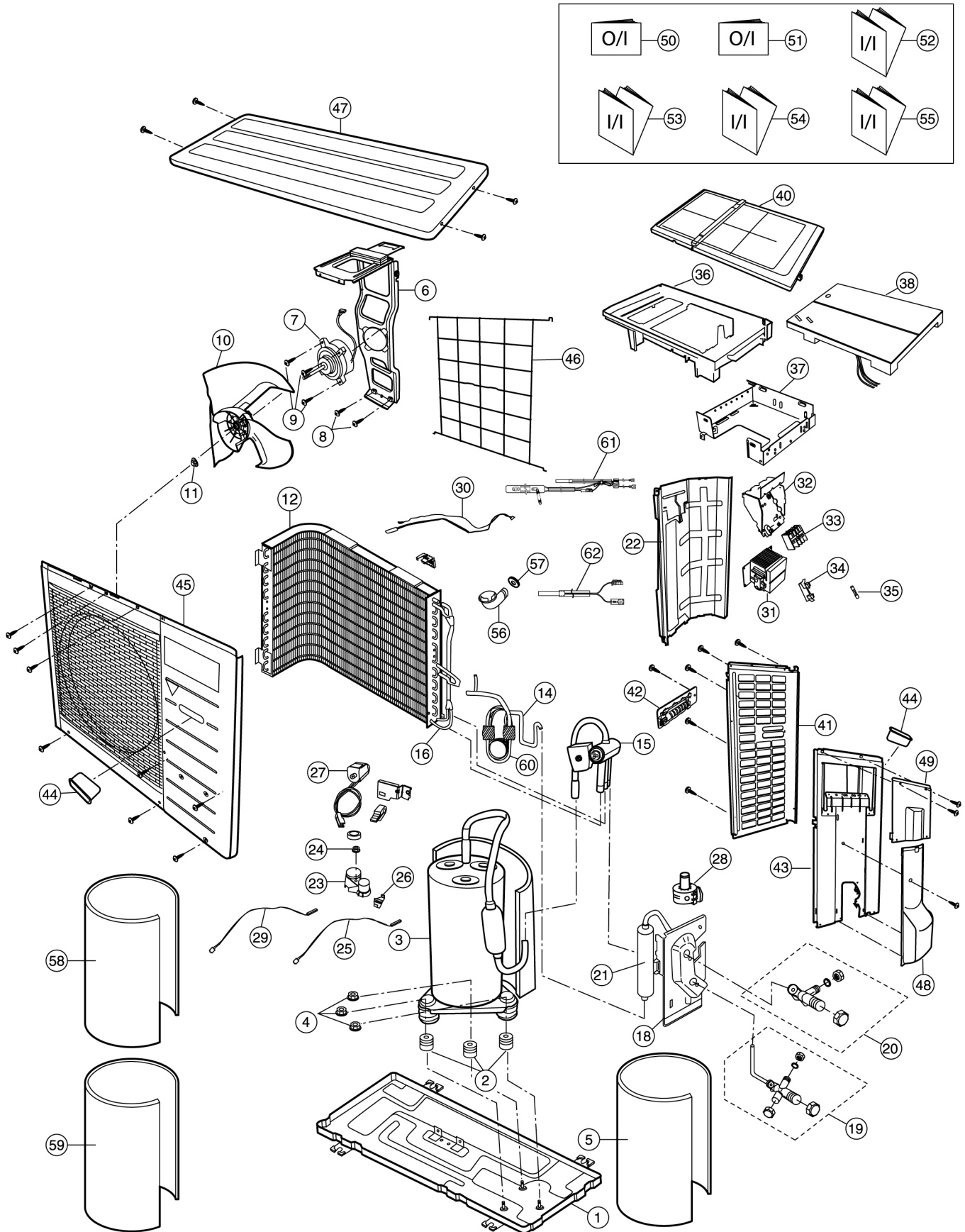
<Model: CS-E18EKEA / CS-E21EKEA>

REF NO.	PART NAME & DESCRIPTION	QTY.	CS-E18EKEA	CS-E21EKEA	REMARKS
1	CHASSY COMPLETE	1	CWD50C1382	←	
2	FAN MOTOR	1	CWA981149J	←	O
3	CROSS FLOW FAN COMPLETE	1	CWH02C1010	←	
4	SCREW - CROSS FLOW FAN	1	CWH551146	←	
5	BEARING ASS'Y	1	CWH64K007	←	
6	EVAPORATOR	1	CWB30C1859	CWB30C1860	
7	FLARE NUT	1	CWT251030 (1/4")	←	
8	FLARE NUT	1	CWT251032 (1/2")	←	
9	HOLDER SENSOR	1	CWH32143	←	
10	DISCHARGE GRILLE COMPLETE	1	CWE20C2441	←	
11	VERTICAL VANE	15	CWE241088	←	
12	CONNECTING BAR	1	CWE261025	←	
13	AIR SWING MOTOR	1	CWA98260+MJ	←	O
13a	LEAD WIRE - AIR SWING MOTOR	1	CWA67C3849	←	
14	AIR SWING MOTOR	1	CWA98K1008	←	O
15	LEAD WIRE - AIR SWING MOTOR	1	CWA67C3731	←	
16	HORIZONTAL VANE	1	CWE241152A	←	
17	HORIZONTAL VANE	1	CWE241153A	←	
18	CAP - DRAIN TRAY	1	CWH52C1001	←	
19	BACK COVER CHASSIS	1	CWD932162B	←	
20	CONTROL BOARD CASING	1	CWH102291	←	
21	TERMINAL BOARD COMPLETE	1	CWA28C2120J	←	O
22	POWER SUPPLY CORD	1	CWA20C2493	←	O
23	ELECTRONIC CONTROLLER - MAIN	1	CWA73C2017	CWA73C2018	O
24	INDICATOR COMPLETE	1	CWE39C1116	←	O
25	INDICATOR HOLDER	1	CWD932435	←	
26	INDICATOR HOLDER	1	CWD932436	←	
27	SENSOR COMPLETE	1	CWA50C2322	←	O
28	CONTROL BOARD TOP COVER	1	CWH131209	←	
29	CONTROL BOARD FRONT COVER	1	CWH131210	←	
30	REMOTE CONTROL COMPLETE	1	CWA75C2807	←	O
31	FRONT GRILLE COMPLETE	1	CWE11C3160	←	O
32	INTAKE GRILLE COMPLETE	1	CWE22C1159	←	O
33	GRILLE DOOR	1	CWE141076	←	
34	AIR FILTER (L)	1	CWD001137	←	
35	AIR FILTER (R)	1	CWD001138	←	
36	SCREW - FRONT GRILLE	3	XTT4+16CFJ	←	
37	CAP - FRONT GRILLE	3	CWH521062A	←	
38	DRAIN HOSE	1	CWH851063	←	
39	BAG COMPLETE - INSTALLATION SCREW	1	CWH82C067	←	
40	INSTALLATION PLATE	1	CWH36K1007	←	
41	FULCRUM	2	CWH621047	←	
42	ELECTRONIC CONTROLLER - IONIZER	1	CWA743675	←	O
43	CASING - IONIZER	1	CWD932464	←	
44	CASING - IONIZER	1	CWD932527	←	
45	ION GENERATOR	1	CWH94C0001	←	
46	SUPERSONIC AIR PURIFYING DEVICE	1	CWH91C1013	←	
47	ELECTRONIC CONTROLLER SUPERSONIC	1	CWA743874	←	O
48	SUPER ALLERU BUSTER FILTER	1	CWD00C1133	←	
49	FRAME FR AIR FILTER SUPERSONIC	1	CWD011027	←	
50	FRAME FR AIR FILTER SUPERSONIC	1	CWD011026	←	
51	ELECTRONIC CONTROLLER - POWER	1	CWA744060	←	O

(Note)

- All parts are supplied from PHAAM, Malaysia (Vendor Code: 061).
- "O" marked parts are recommended to be kept in stock.

### 17.3. CU-E15EKEA CU-E18EKEA CU-E21EKEA



Note:  
 The above exploded view is for the purpose of parts disassembly and replacement.  
 The non-numbered parts are not kept as standard service parts.

<Model: CU-E15EKEA / CU-E18EKEA / CU-E21EKEA>

REF. NO.	DESCRIPTION & NAME	QTY.	CU-E15EKEA	CU-E18EKEA	CU-E21EKEA	REMARKS
1	CHASSY ASS'Y	1	CWD50K2085	←	←	
2	ANTI-VIBRATION BUSHING	3	CWH50077	←	←	
3	COMPRESSOR	1	5CS130XAD04	←	←	O
4	NUT-COMPRESSOR MOUNT	3	CWH56000J	←	←	
5	SOUND PROOF MATERIAL	1	CWG302302	←	←	
6	FAN MOTOR BRACKET	1	CWD541084	CWD541054	←	
7	FAN MOTOR	1	CWA981166J	←	←	O
8	SCREW - FAN MOTOR BRACKET	2	CWH551060J	←	←	
9	SCREW - FAN MOTOR MOUNT	3	CWH551106J	←	←	
10	PROPELLER FAN ASSY	1	CWH03K1016	←	←	
11	NUT - PROPELLER FAN	1	CWH56053J	←	←	
12	CONDENSER	1	CWB32C1583	CWB32C1527	CWB32C1526	
14	TUBE ASS'Y COMPLETE (CAP TUBE/EXP.VALVE)	1	CWT023679	←	←	O
15	4 WAYS VALVE	1	CWB001057	←	CWB001026J	
16	STRAINER	1	CWB11094	←	←	
18	HOLDER - COUPLING	1	CWH351056	←	←	
19	3 WAYS VALVE (GAS)	1	CWB011338	←	←	O
20	2 WAYS VALVE (LIQUID)	1	CWB021292	←	←	O
21	OIL SEPARATER ASS'Y	1	-	-	CWB16K1016	O
22	SOUND PROOF BOARD	1	CWH151050	←	←	
23	TERMINAL COVER	1	CWH171001	←	←	
24	NUT-TERMINAL COVER	1	CWH7080300J	←	←	
25	SENSOR COMPLETE (COMP. TOP)	1	CWA50C2185	←	←	
26	HOLDER SENSOR	1	CWH321010	←	←	
27	V-COIL COMPLETE (4-WAYS VALVE)	1	CWA43C2168J	←	←	
28	V-COIL COMPLETE (EXPAND VALVE)	1	CWA43C2141J	←	←	
29	SENSOR COMPLETE (COMP. DISC.)	1	CWA50C2180	←	←	
30	SENSOR COMPLETE	1	CWA50C2181	←	←	
31	REACTOR	1	CWA421069	←	←	
32	CONTROL BOARD CASING (SIDE)	1	CWH102273	←	←	
33	TERMINAL BOARD ASSY	1	CWA28K1021J	←	←	
34	FUSE HOLDERS	1	K3GB1BH00005	←	←	
35	FUSE	1	XBA2C31TR0	←	←	
36	CONTROL BOARD CASING (TOP)	1	CWH102204	←	←	
37	CONTROL BOARD CASING (BOTTOM)	1	CWH102282	←	←	
38	ELECTRONIC CONTROLLER - MAIN	1	CWA73C2106R	CWA73C2107R	CWA73C2108R	O
40	CONTROL BOARD COVER (TOP)	1	CWH131167	←	←	
41	CABINET SIDE PLATE (LEFT)	1	CWE041082A	←	←	
42	HANDLE	1	CWE161010	←	←	
43	CABINET SIDE PLATE (RIGHT)	1	CWE041158A	←	←	
44	HANDLE	2	CWE16000E	←	←	
45	CABINET FRONT PLATE CO.	1	CWE06K1043	←	←	
46	WIRE NET	1	CWD041041A	←	←	
47	CABINET TOP PLATE	1	CWE031031A	←	←	
48	CONTROL BOARD COVER (BOTTOM)	1	CWH131168	←	←	
49	CONTROL BOARD COVER (TOP)	1	CWH131169A	←	←	
50	OPERATING INSTRUCTION	1	CWF565136	CWF565138	←	
51	OPERATING INSTRUCTION	1	CWF565137	CWF565139	←	
52	INSTALLATION INSTRUCTION	1	CWF612921	CWF612925	←	
53	INSTALLATION INSTRUCTION	1	CWF612922	CWF612926	←	
54	INSTALLATION INSTRUCTION	1	CWF612923	CWF612927	←	
55	INSTALLATION INSTRUCTION	1	CWF612924	CWF612928	←	

REF. NO.	DESCRIPTION & NAME	QTY.	CU-E15EKEA	CU-E18EKEA	CU-E21EKEA	REMARKS
56	DRAIN HOSE	1	CWH5850080	←	←	
57	PACKING	1	CWB81012	←	←	
58	SOUND PROOF MATERIAL	1	CWG302290	CWG302270	←	
59	SOUND PROOF MATERIAL	1	CWG302301	CWG302300	←	
60	TUBE ASS'Y (CAP. TUBE)	1	-	-	CWT022997	
61	HEATER COMPLETE	1	CWA34C1005	←	←	
62	OVER HEAT PROTECTOR COMPLETE	1	CWA14C1011	←	←	

(Note)

- All parts are supplied from PHAAM, Malaysia (Vendor Code: 061).
- "O" marked parts are recommended to be kept in stock.